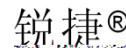
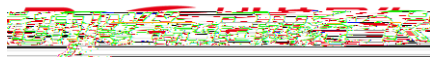


RG-WALL 1600-X9850 V2.0

V1.0

©2000-2023



- _____
- _____
-) _____

1

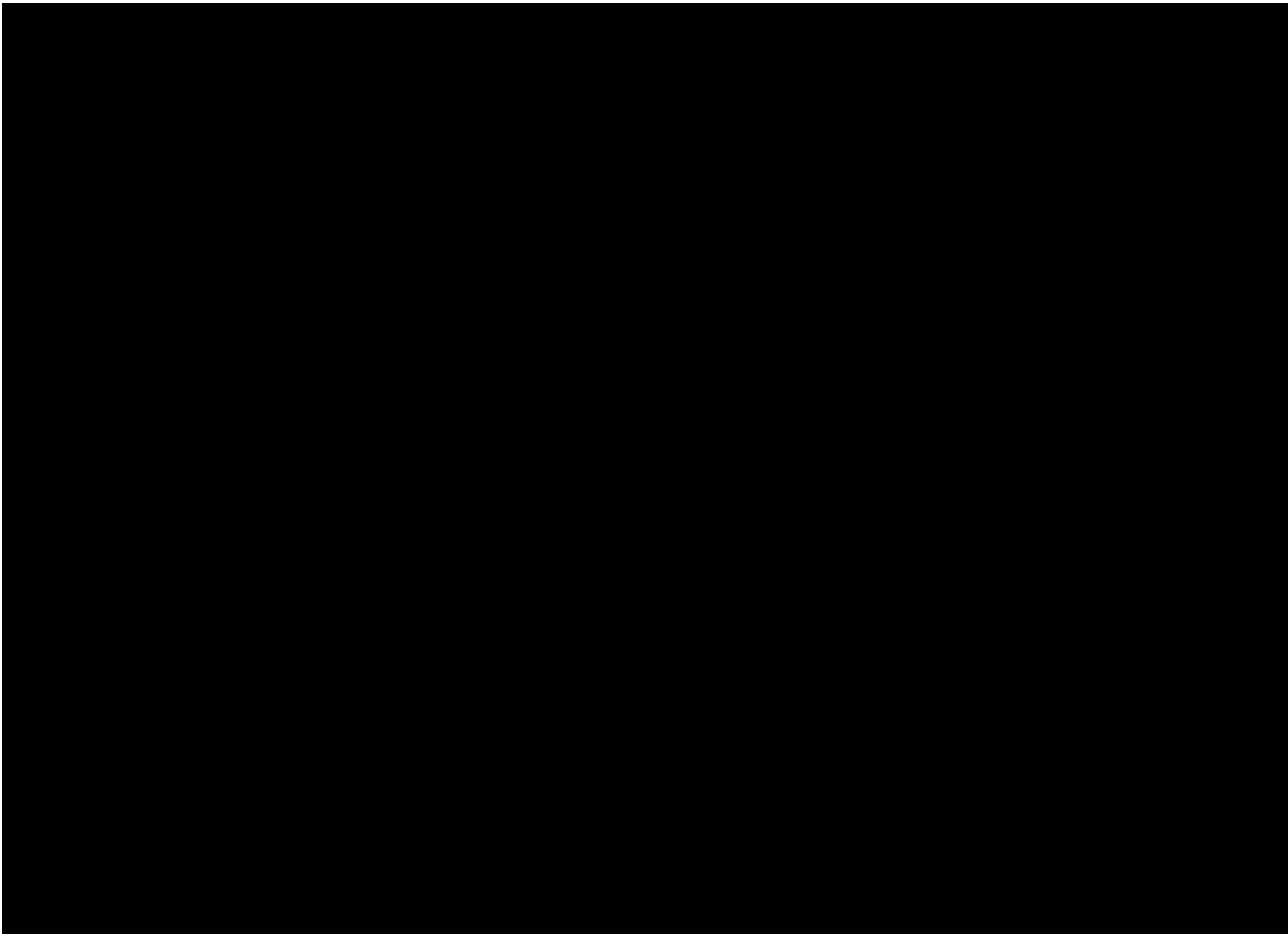
RG-WALL 1600-X9850 V2.0
40G/25G/10G/1G

158Gbps

RG-WALL 1600-X9850 V2.0

1.1 RG-WALL 1600-X9850 V2.0

RG-WALL 1600-X9850 V2.0



2

2.1



RG-WALL 1600-X9850 V2.0



2.1.1

-
-
-

2.1.2

- -
 -
 -
-
-

2.1.3

- -
 -
 -
 -
-

2.1.4

RG-WALL 1600-X9850 V2.0

RG-WALL 1600-X9850 V2.0

-
-

-
-

2.2.3

RG-WALL 1600-X9850 V2.0

-
-
-

RG-WALL 1600-X9850 V2.0

0°C-40°C	20%-90%



1.5M 0.4M

2.2.4

	0.5	1	3	5
/	1.4 x 10	7 x 10	2.4 x 10	1.3 x 10



RG-WALL 1600-X9850 V2.0

	mg/m ³	mg/m ³
	0.2	1.5
	0.006	0.03
	0.04	0.15
	0.05	0.15
	0.01	0.3

2.2.5

RG-WALL 1600-X9850 V2.0

- RG-WALL 1600-X9850 V2.0 100-240 VAC, 47-63 Hz

2.2.6

RG-WALL 1600-X9850 V2.0

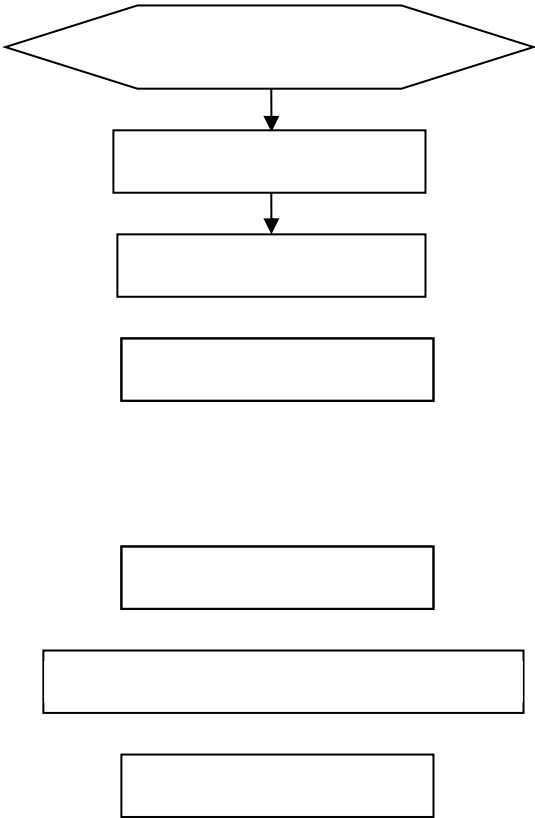
2.2.7 EMI

3

RG-WALL 1600-X9850 V2.0



3.1



3.2

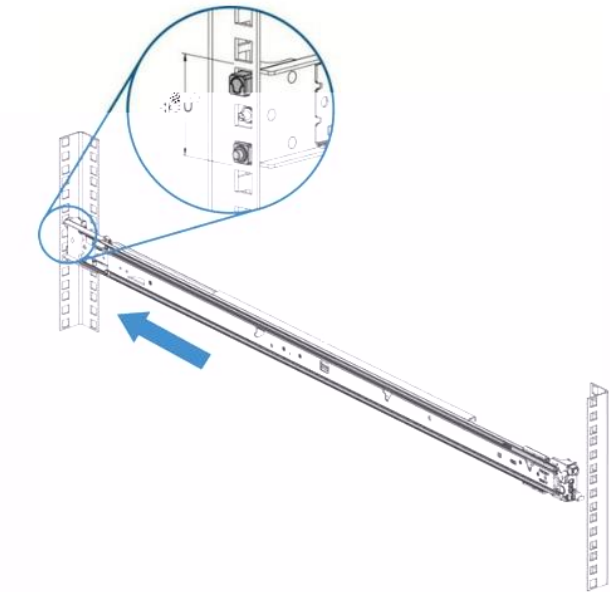
RG-WALL 1600-X9850 V2.0

-
-
-
-
-

3.3

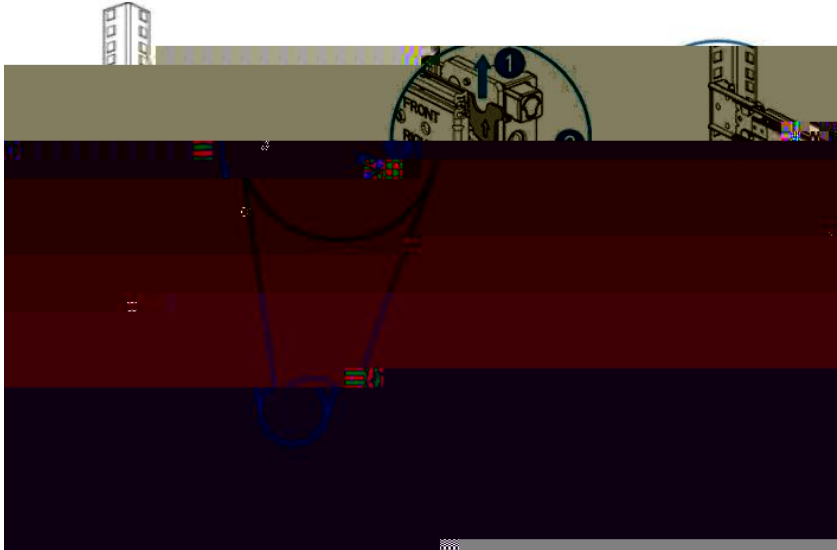
-
-
-
-
-

5mm



2) 1

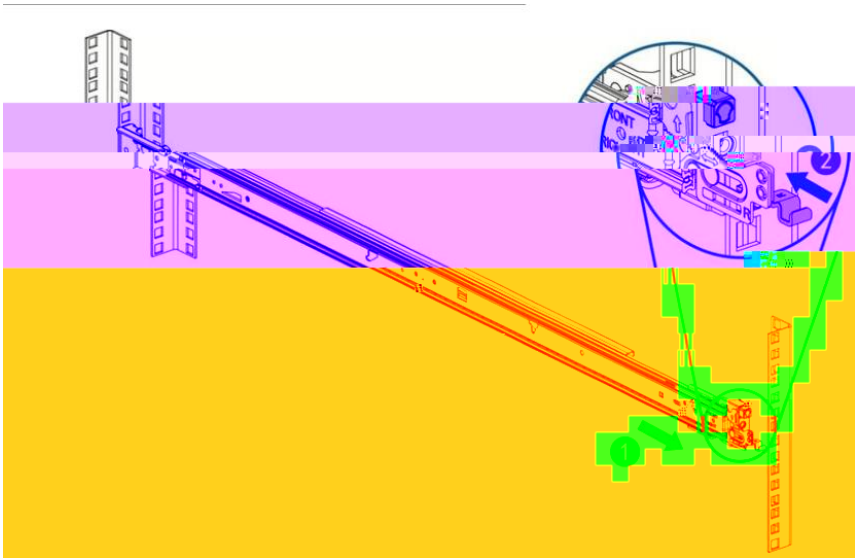
2



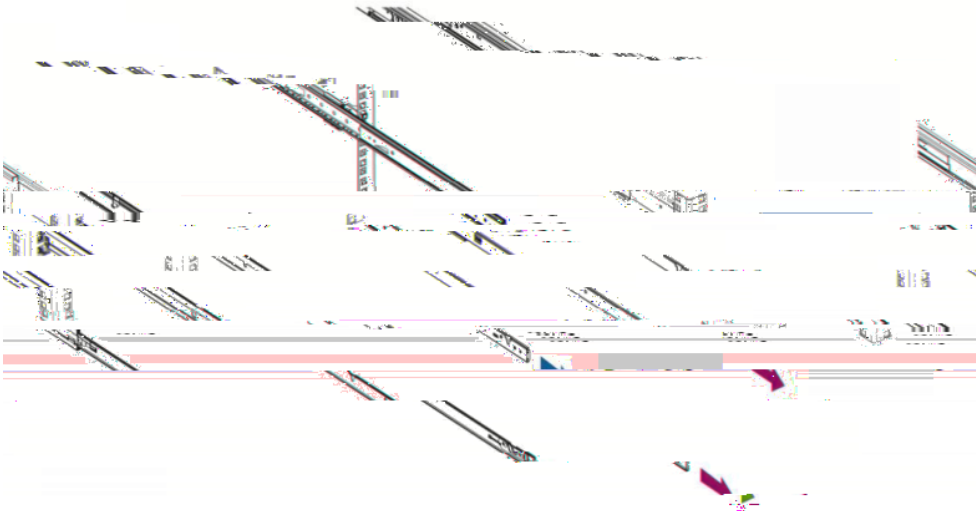
3)

1

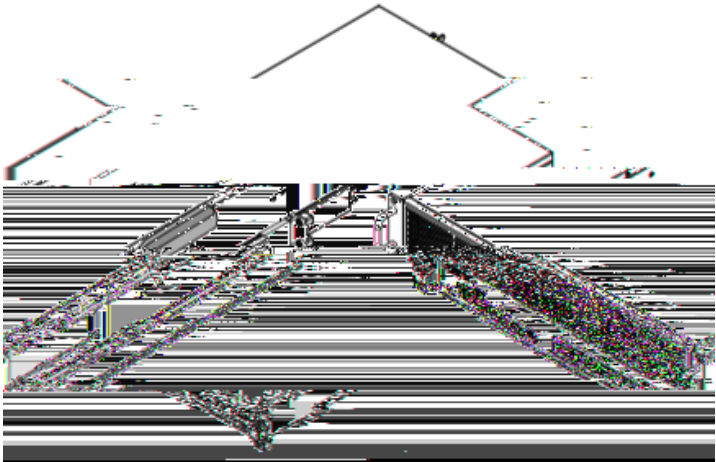
2



4) 2 3



4)



3U

3U

X9850 V2.0

■

- 5) D9 I 3>> +* H
- 6) D9 I 3>> +* H
- 7) D9 I 3>> +* H D9 I 3>> +* H

3.5

-
-
-
-
-

16A

- 8)
- 9)

3	1.5	14AWG
---	-----	-------

3.6

-
-

- 10) D< D<
- 11) D<

-
-

14)

15)

16)

3.8

-
-

SFP+

28)

29)

E8B

E8B

E8B

SFP+

8

4

4.1

PC	Console	.			
	30)	64 +		B5	
	31)	D<	5		
■	PC	PC	Windows3.1	Terminal	Windows 95/98/NT/2000/XP
■			9600	8	1

32)

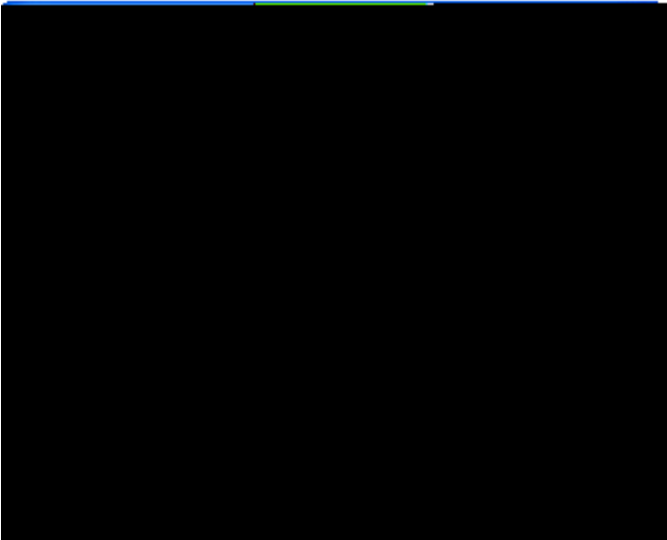
4-1



33)

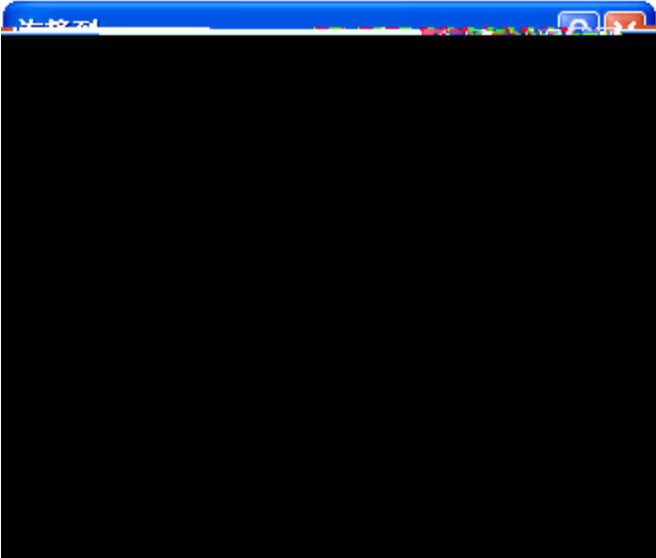
%

4-2



34) . 0

4-3



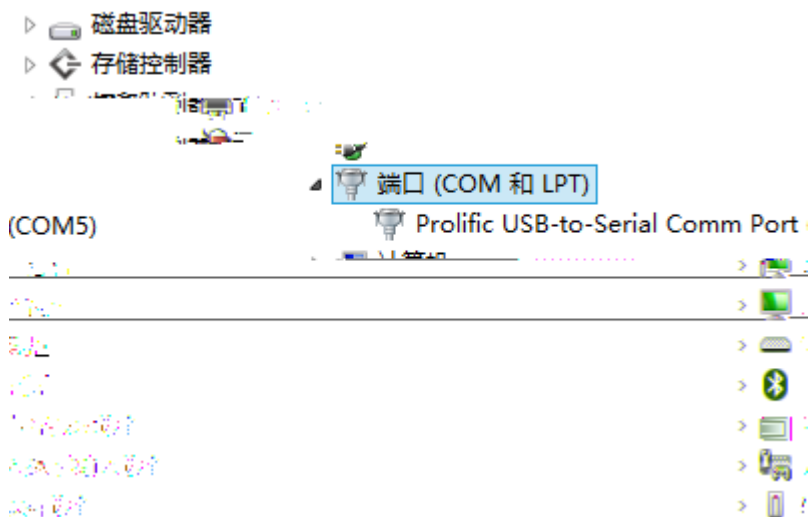
35) * . 0 +

4-4

36) . 0

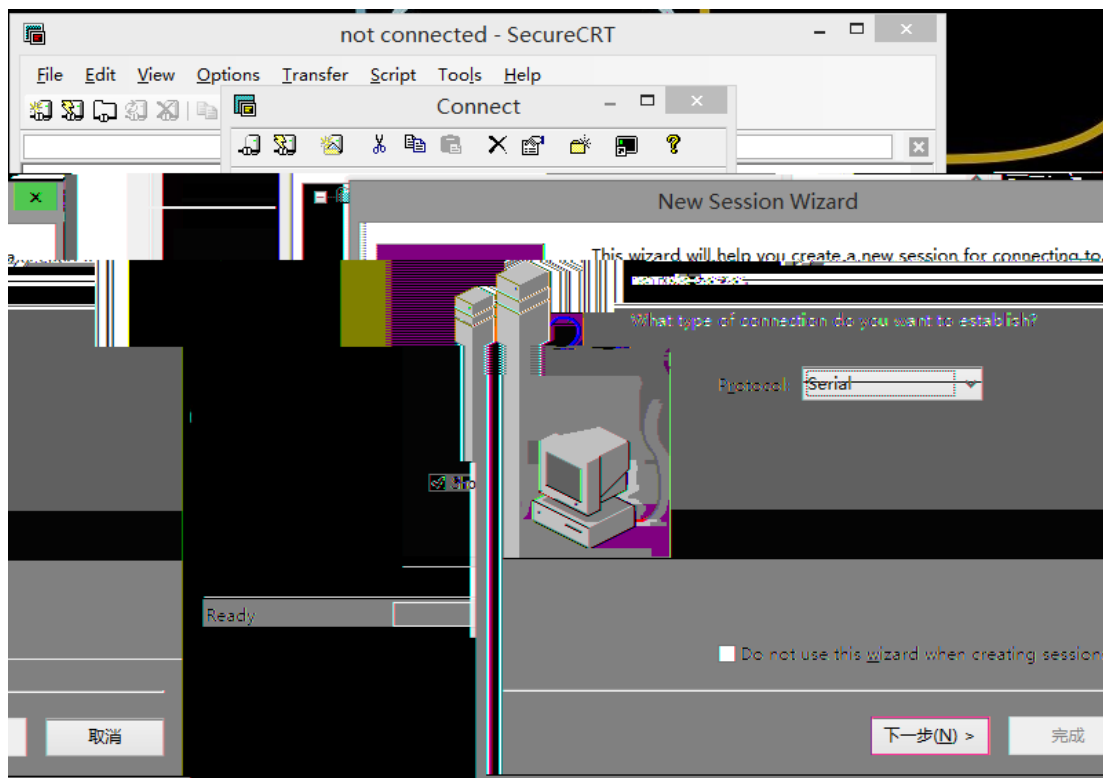
GE4 B5 B5 5 E 5 DF 5

- USB Console USB Console Console USB PC
-



9600 8 1

37) 8 5 5 *
E



*
38) ++

4-9

%

0

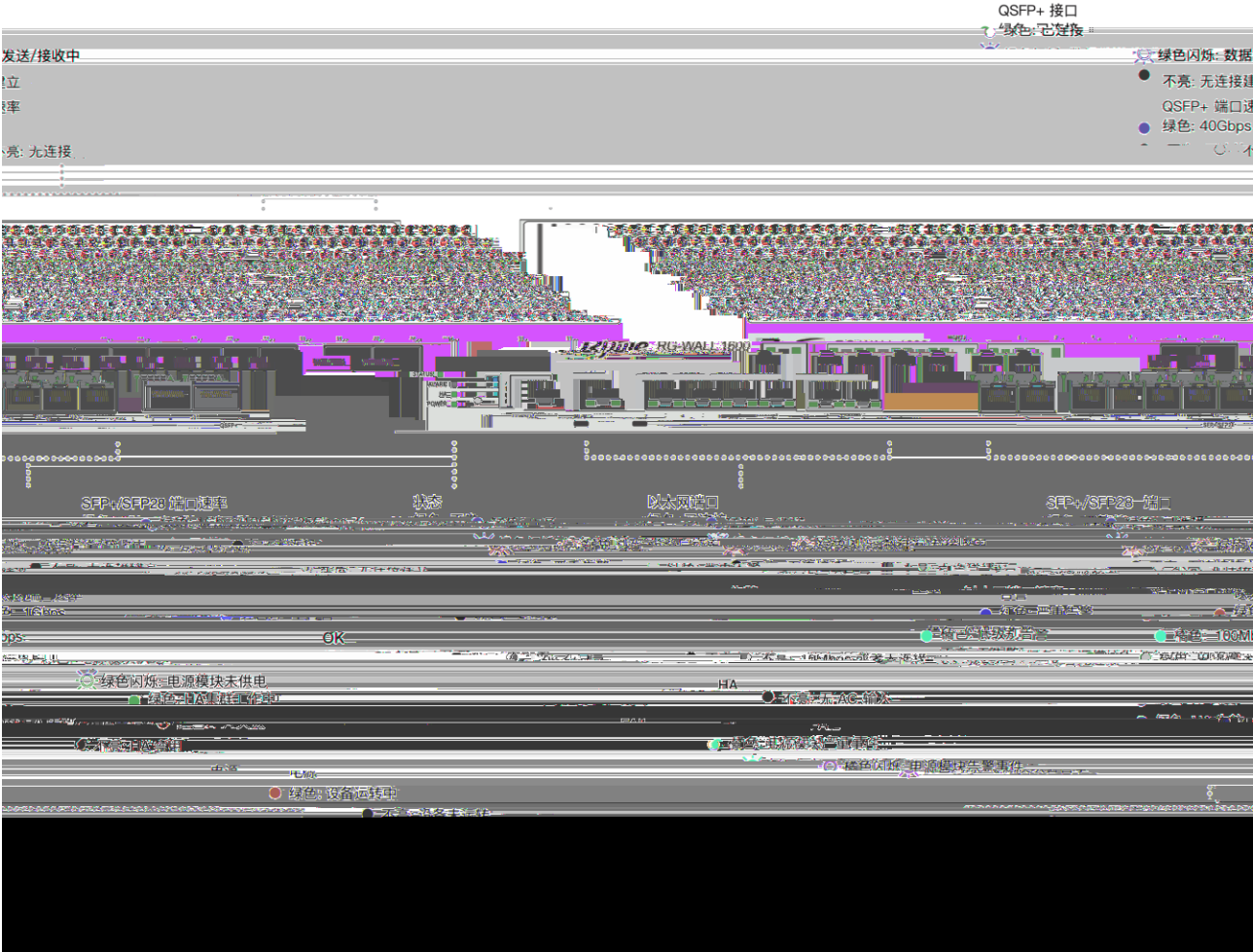
4-10



5

5.1

RG-WALL 1600-X9850 V2.0
5-1 RG-WALL 1600-X9850 V2.0

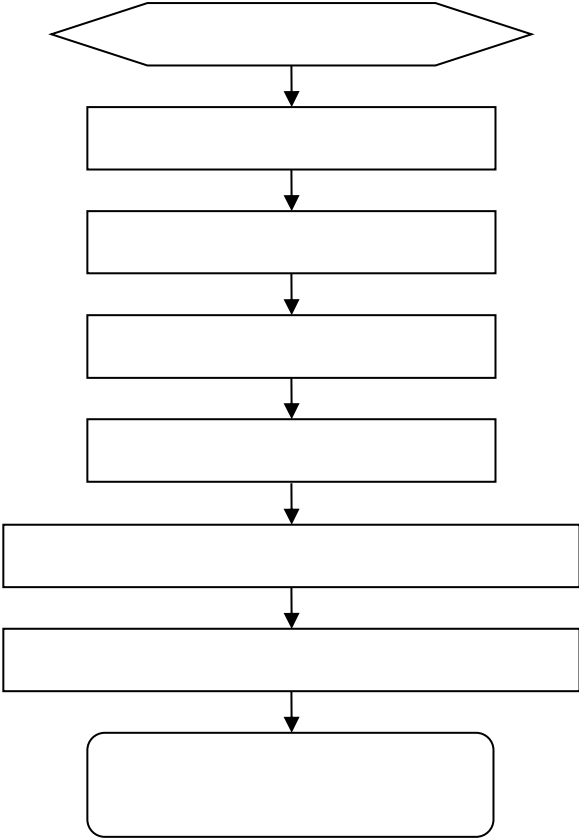


RG-WALL 1600-X9850 V2.0	RG-WALL 1600-X9850 V2.0	Internet	Telnet
RG-WALL 1600-X9850 V2.0		RG-WALL 1600-X9850 V2.0	

5.2

6

6.1



6.2

Status Power

link

1

2

3

4

1310nm

1550nm

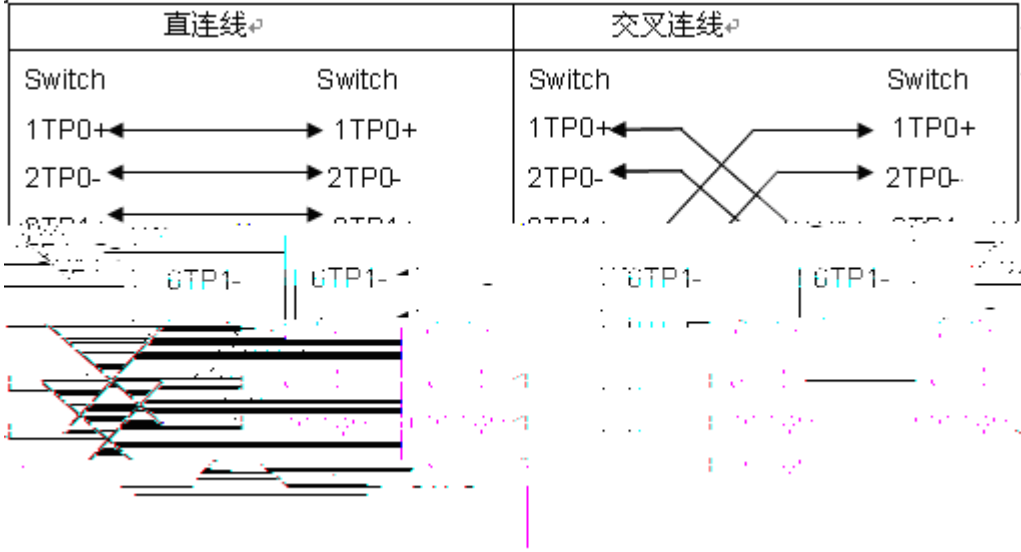
A

1000BASE-T/100BASE-TX/10BASE-T

MDI/MDIX Crossover

1000BASE-T IEEE 802.3ab 100 1000BASE-T 4 100-ohm 5 5 4 UTP 4 STP 1000BASE-T

A-1 1000BASE-T



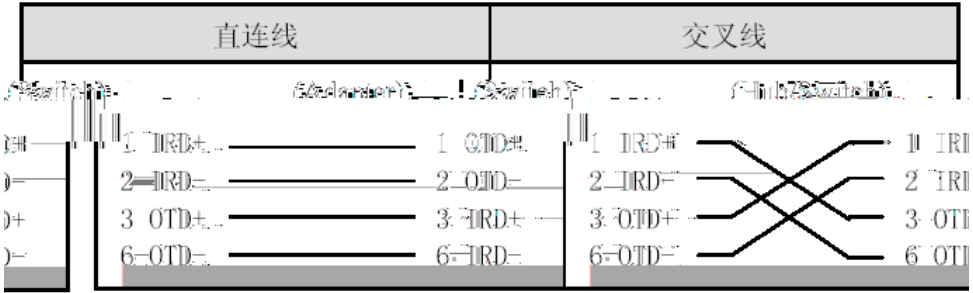
100BASE-TX/10BASE-T 100-ohm 5 100 10Mbps 100-ohm 3,4,5 100BASE-TX/10BASE-T 100Mbps

A-2 100BASE-TX/10BASE-T

Pin	插座	插头
1	Input Receive Data+	Output Transmit Data+
2	Input Receive Data-	Output Transmit Data-
3	Input Receive Data-	Output Transmit Data-
6	Input Receive Data-	Output Transmit Data-

100BASE-TX/10BASE-T

A-3 100BASE-TX/10BASE-T



A 4



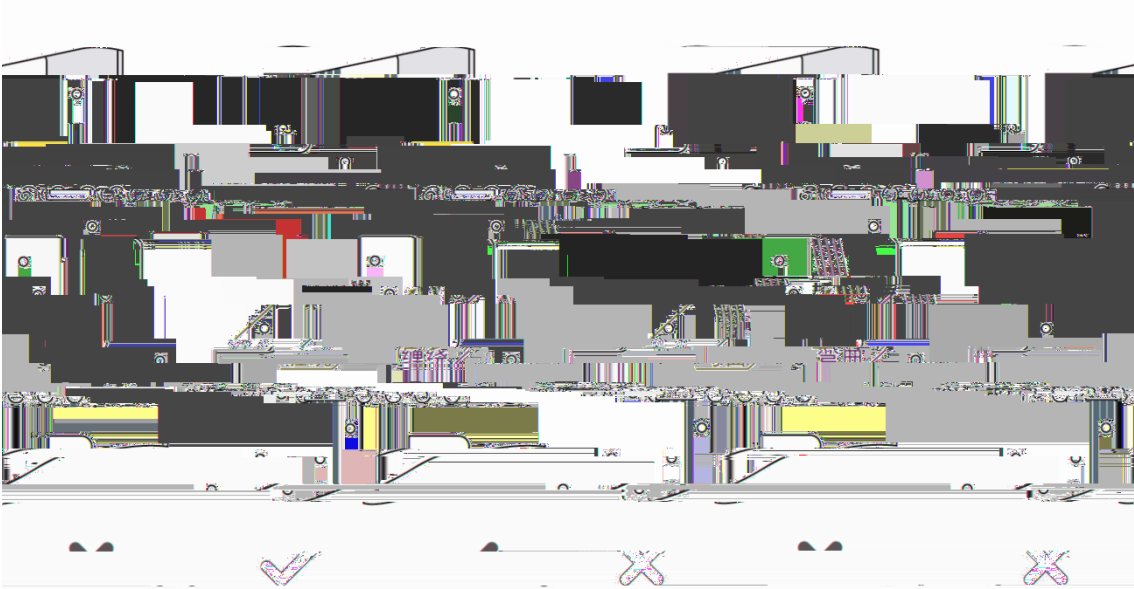
B

RG-WALL 1600-X9850 V2.0

19

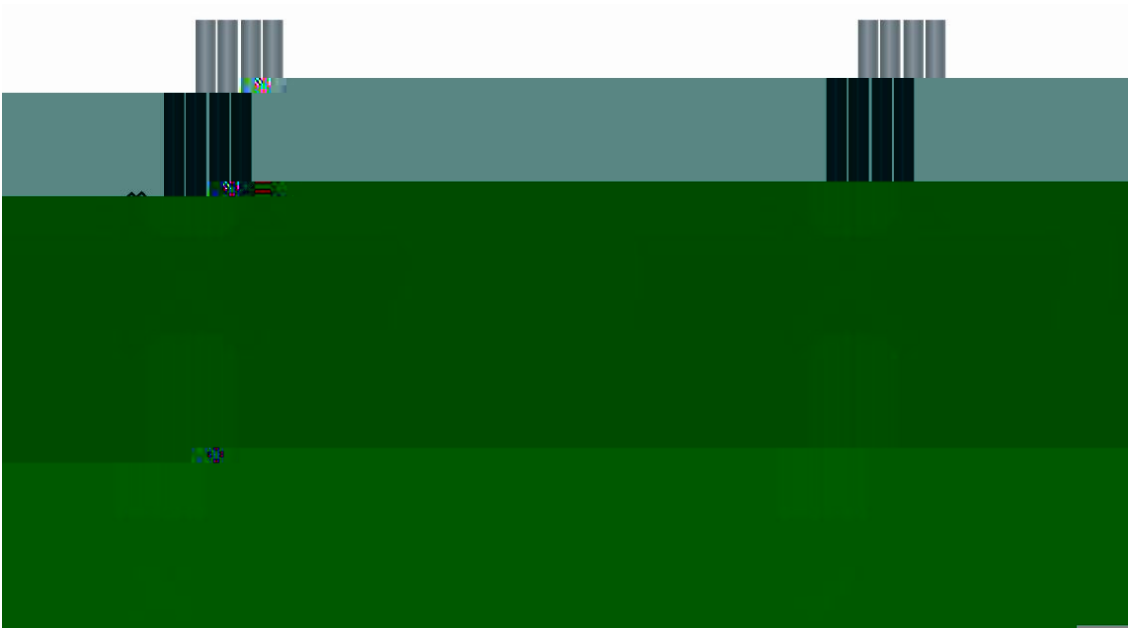
- 7 5
- 7 10
- SFP+ 5 10
- 25
- 20
- 10
-
- D-1

D-1



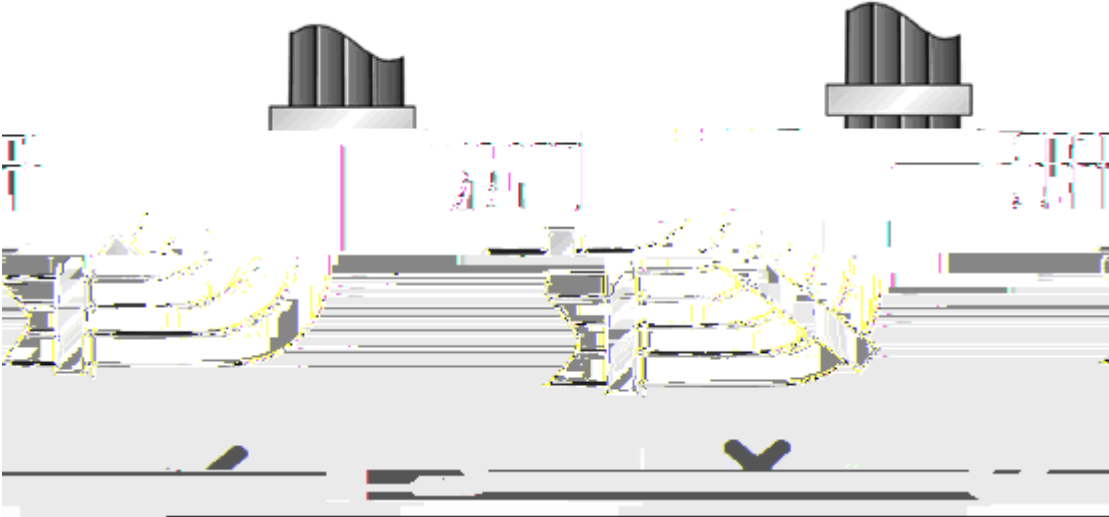
-
-
-
-
-

D-2



D-3

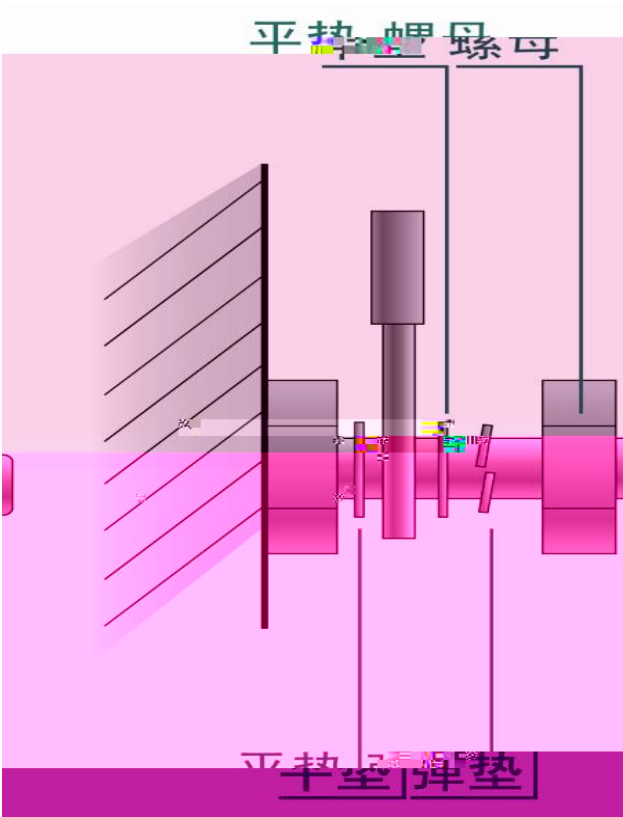
D-3



D-4

220V -48V

D-4



-
-
-
-

mm	mm
10	80~150
10~30	150~200
30	200~300

-
-