

G0/25

G0/24



(SPAN)

SPAN

" "

access

access

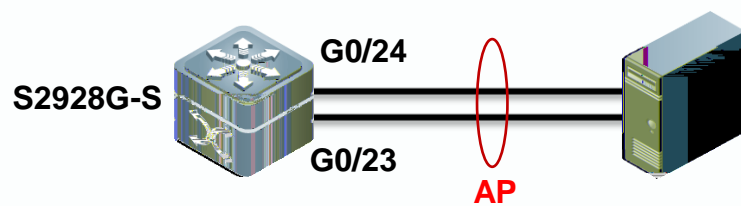
trunk

trunk



```
Ruijie>enable
Ruijie#configure terminal
Ruijie(config)#monitor session 1 source interface gigabitEthernet 0/25 both ----->
g0/25
both rx both
```



S2928G-S

1.5G

1000M

2G



Aggregate Port

AP

AP

IEEE802.3ad

AP

AP

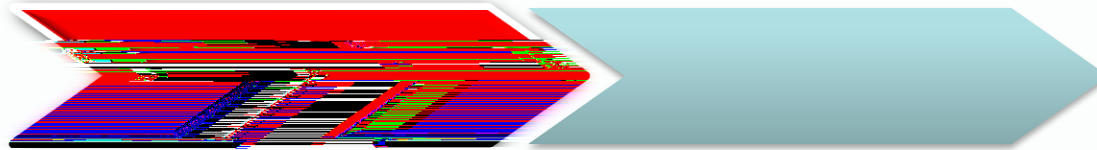
AP

AP

AP

LACP

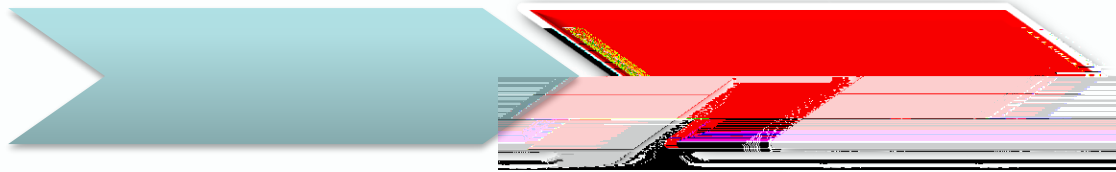
access



```
rujie(config)#interface aggregateport 1
rujie(config-if-AggregatePort 1)#switchport
rujie(config-if-AggregatePort 1)#exit
rujie(config)#interface gi0/23
rujie(config-if-GigabitEthernet 0/23)#port-group 1
rujie(config-if-GigabitEthernet 0/23)#exit
rujie(config)#interface gi0/24
rujie(config-if-GigabitEthernet 0/24)#port-group 1
rujie(config-if-GigabitEthernet 0/24)#end
```

AP1
access vlan 201

AP1



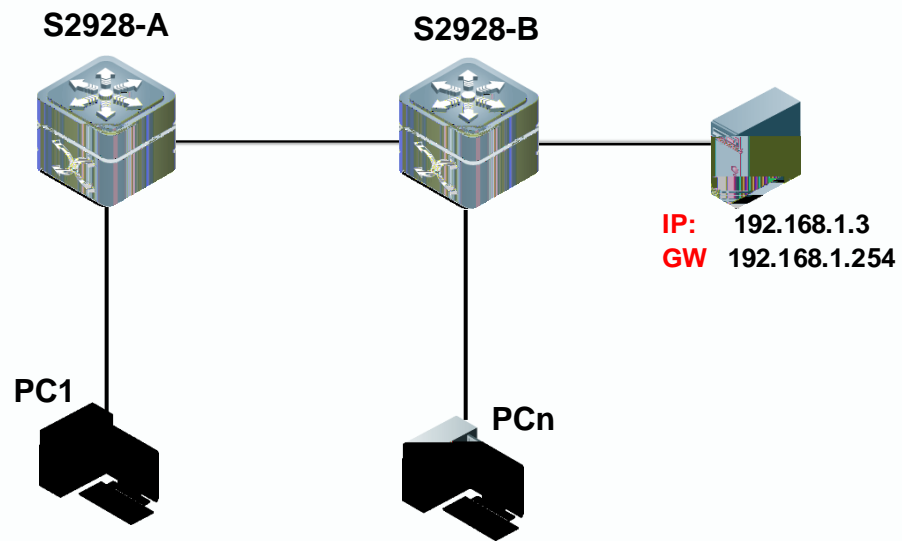
AP1

```
ruijie#show interfaces aggregateport 1
AggregatePort 1 is UP , line p
Hardware is Aggregate Link Ag
Interface address is: no ip addre
MTU 1500 bytes, BW 2000000 Kbit
----->
Members: (count=2)
  GigabitEthernet 0/23   Link Status: Up
  GigabitEthernet 0/24   Link Status: Up
```

2 AP1
2G

up
down





XX

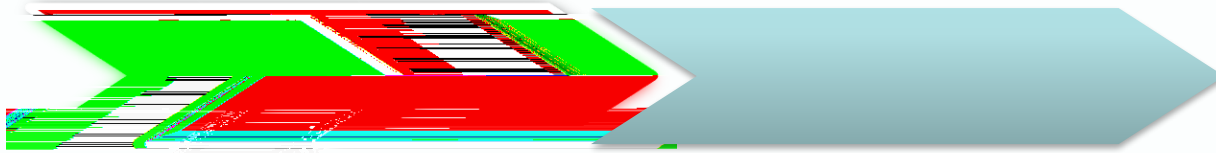
S2928G-S

100

ghost

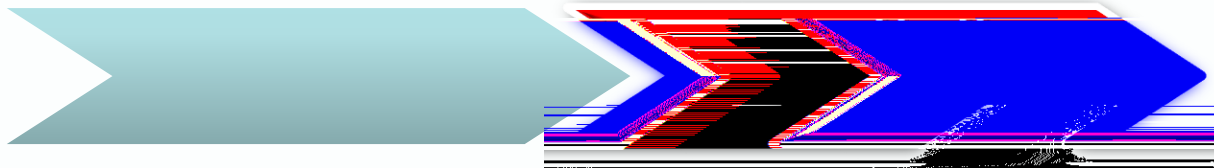
S2928G-S

Ruote



```
S2928-A#conf terminal
S2928-A(config)#interface range gi0/1-24
S2928-A(config-if-range)#no storm-control broadcast
S2928-A(config-if-range)#no storm-control multicast
S2928-A(config-if-range)#flowcontrol off
S2928-A(config-if-range)#end
S2928-A#write
```

```
S2928-B#conf terminal
S2928-B(config)#interface range gi0/1-24
S2928-B(config-if-range)#no storm-control broadcast
S2928-B(config-if-range)#no storm-control multicast
S2928-B(config-if-range)#flowcontrol off
S2928-B(config-if-range)#end
S2928-
```

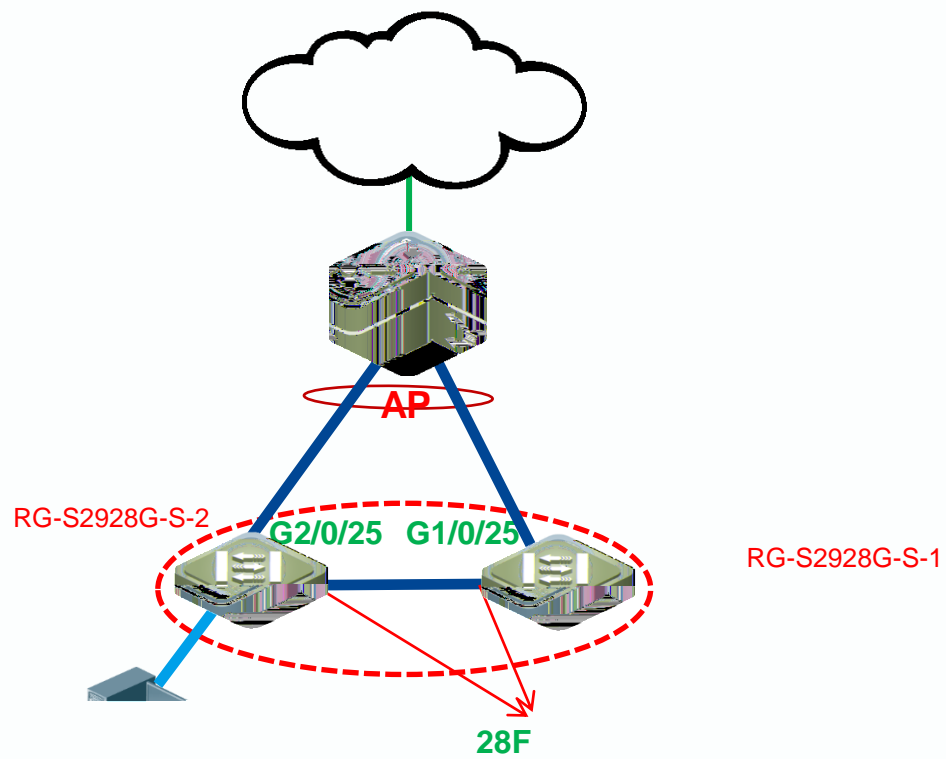


```
ruijie#show storm-control
```

```
Interface          Broadcast Control      Control Unicast Control Action
```

Interface	Broadcast Control	Control	Control	Unicast Control	Action
GigabitEthernet 0/1	Disabled	Disabled	1	%	none
GigabitEthernet 0/2	Disabled	Disabled	1	%	none
GigabitEthernet 0/23	Disabled	Disabled	1	%	none
GigabitEthernet 0/24	Disabled	Disabled	1	%	none





XX

RG-S2928G-S
PC

I

IP

5

!

"

Ruote

www.rubicon.it



1

+

1Gbps~10Gbps



2 S2928G-S

3

4 S2928G-S

4



S2928G-S

web

console

S2928G-S

S2928G-S

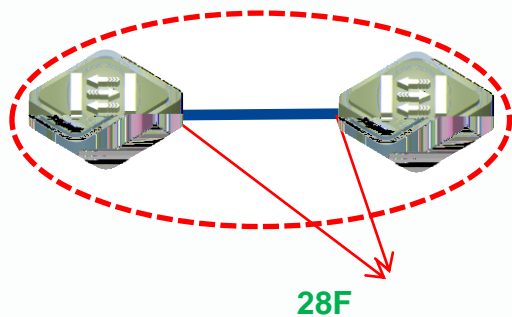
2.5G

1

2.5G

S2928G-S

2



28F



2.5G

RG-S2928G-S-1

```
ruijie#conf terminal
ruijie(config)#device-priority 10

ruijie(config)#device-description RG-S2928G-S-1

ruijie(config)#interface gigabitEthernet 0/28
ruijie(config-if-GigabitEthernet 0/28)#stack on
you must reload switch to change interface GigabitEthernet 0/28 to
stack mode!

ruijie#write
```

RG-S2928G-S-2

```
ruijie#conf terminal
ruijie(config)#device-description RG-S2928G-S-2

ruijie(config)#interface gigabitEthernet 0/28
ruijie(config-if-GigabitEthernet 0/28)#stack on
you must reload switch to change interface GigabitEthernet 0/28
to stack mode!

ruijie#write
```






Ruote



www.ruijie.com.cn

www.ruijie.com.cn/service.aspx

support.ruijie.com.cn

webchat.ruijie.com.cn

4008-111-000