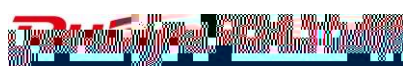




©2013



RGOS®

RGNOS®

<http://www.ruijie.com.cn/>
<http://webchat.ruijie.com.cn>
<http://www.ruijie.com.cn/service.aspx>
4008-111-000
<http://support.ruijie.com.cn>
service@ruijie.com.cn

7× 24



RG-WALL 1600-M5

RG-WALL 1600-M5

RG-WALL 1600-M5

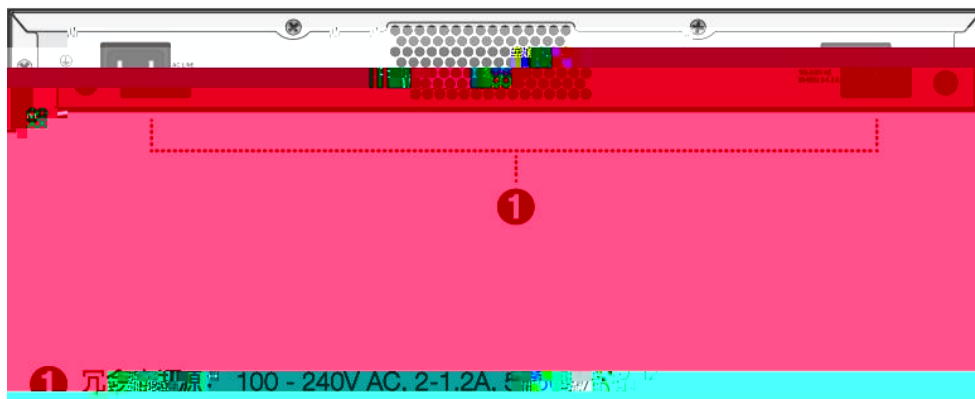
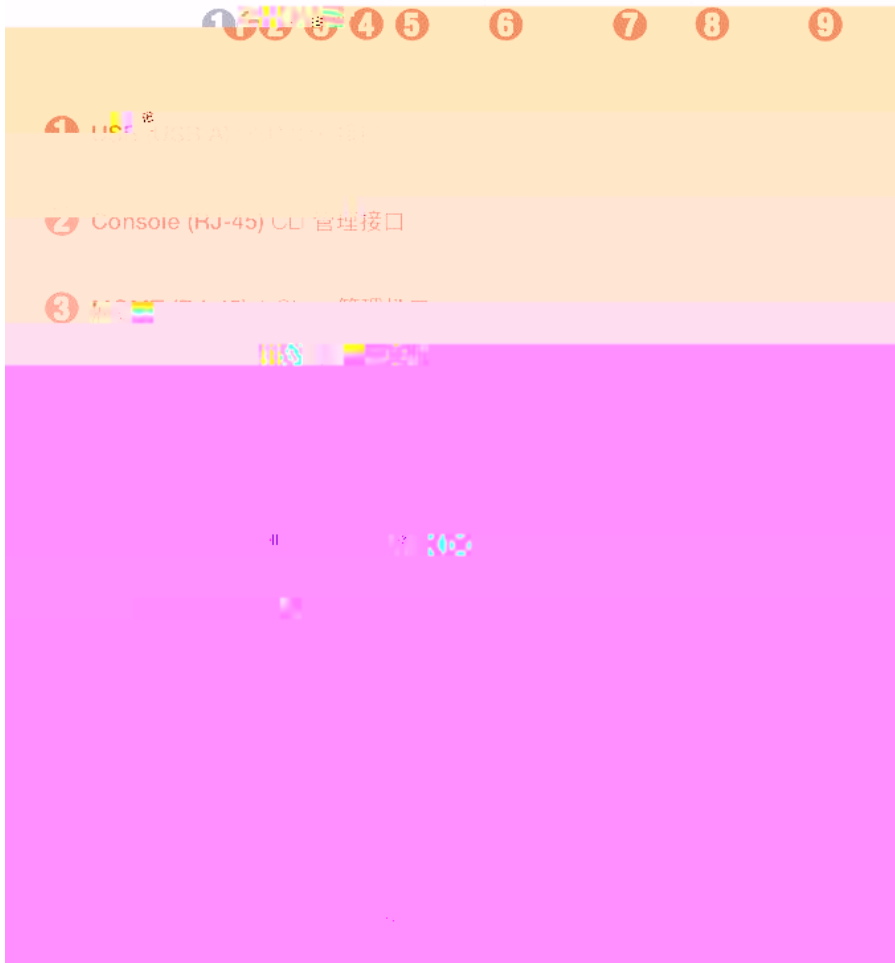
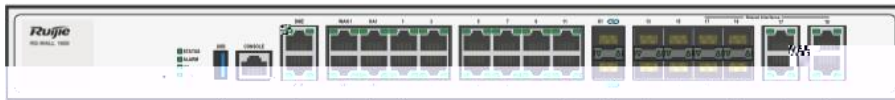
1.1 RG-WAI

| | |
|---|---------------------------------|
| | |
| | |
| | |
| | |
| | |
| | |
| | |
| | |
| | |
| | |
| | 254 x 432 x 44 L * W * H mm 1RU |
| | 100-240 VAC, 50-60 Hz |
| | 110 V / 3 A, 220 V / 1.5 A |
| / | 35.1W/38.7 W |
| | 119.77 BTU/h |

RG-WALL 1600-M5800E

1-2

1-2 RG-WALL 1600-M5800E



2

RG-WALL 1600-M5800E

2.1

2.1.1

2.1.2

2.1.3

r

2.2.3



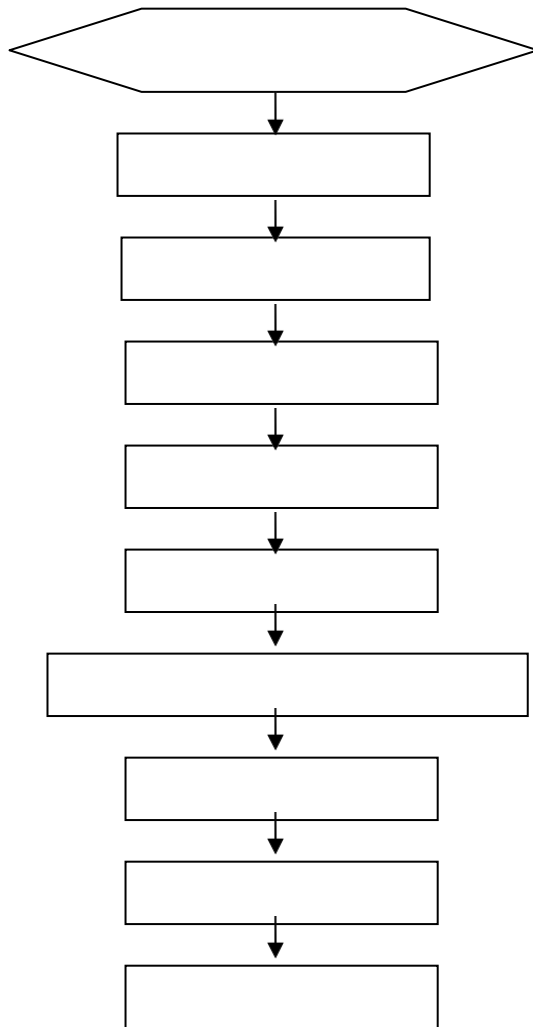
2.2.7 EMI



3

RG-WALL 1600-M5800E

3.1



3.2

RG-WALL 1600-M5800E

3.3

5mm

1.5cm

- 1)
- 2)
- 3)
- 4)

IEC60297 19
1RU=44.45mm(1.75inch) 1RU 3-1

RU Rack Unit

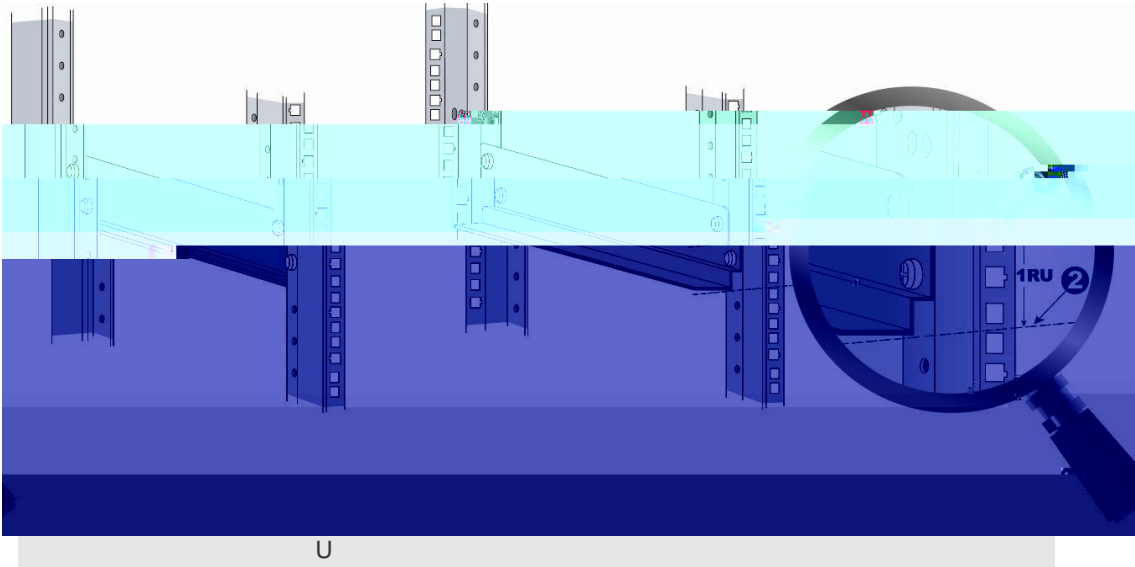
WALL1600-M5800E

RU

U

RG-

3-1



RG-WALL 1600-M5800E
M5800E

RG-WALL1600-

3.4

RG-WALL 1600-M5800E

10mm

- 1) RG-WALL 1600-M5800E
- 2) RG-WALL 1600-M5800E
- 3) RG-WALL 1600-M5800E RG-WALL 1600-M5800E

3.5

- 1)
- 2)
- 3) 16A
- 4)
- 5)

- 1)
- 2)

3

1.5

14AWG

3.6

- 1)
- 2)

- 1) RJ45
- 2) RJ45
- 3) RJ45
- 4)

3.7

- 1)
- 2)
- 3)

- 1)
- 2)
- 3)

3.8

- 1)
- 2)
- 3)
- 4)

- 1)
- 2)

- 1)
- 2)
- 3)

3.9

SFP

SFP

SFP

- 1)
- 2) SFP

3) ~~POE~~ 3-7

- 1.
2. SFP
- 3.
4. SFP

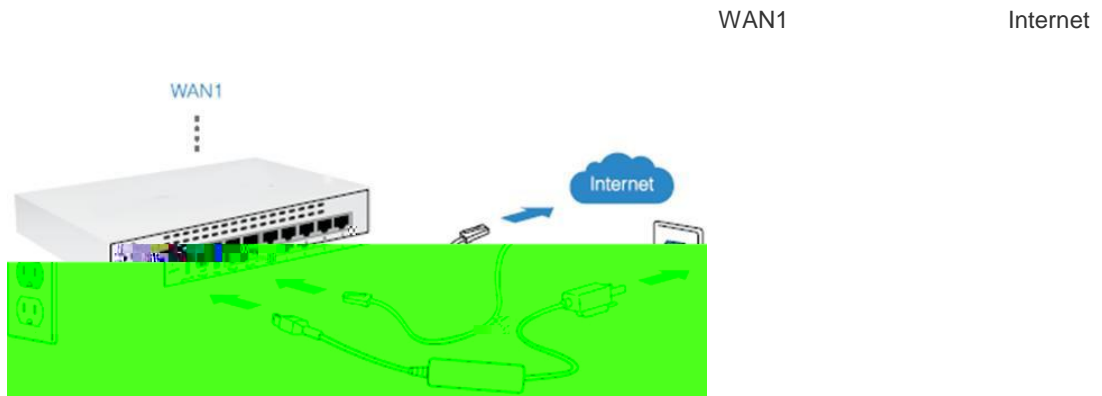
3-

4

4.1

Console

4-1



4-1

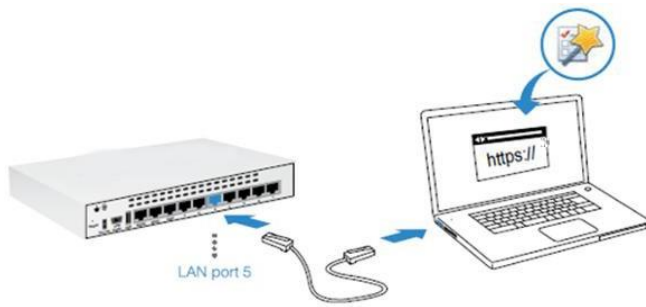
Web

admin

LAN

PC

IP : <https://192.168.1.99>



4-2

Console

PC

Console

a)

DB-9

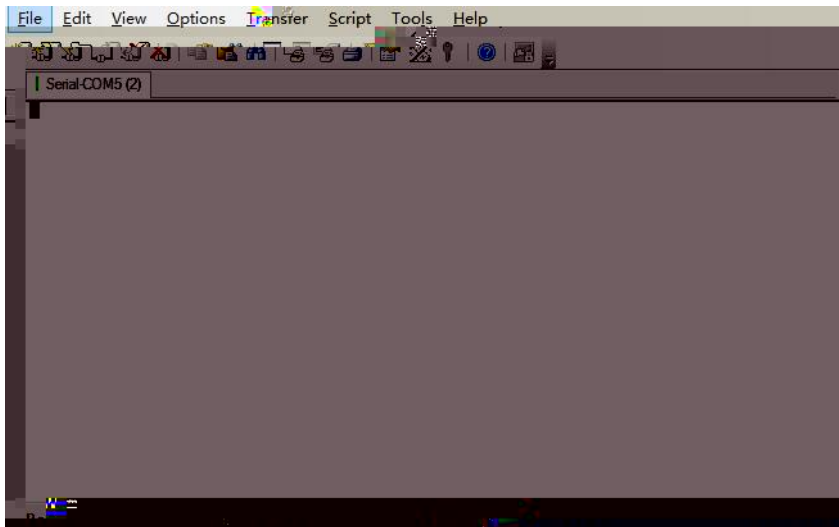
PC

| | | | | | | | |
|-----|------|----|---------|---------|---------|---------|-----|
| b) | RJ45 | | | Console | | | |
| | 1) | PC | Console | USB | Console | Console | USB |
| USB | | | | | | | |
| | 2) | PC | | | " | | |

d)

< >

4-7



4-7

4.2

1)

2)

3)

4)

PC

1)

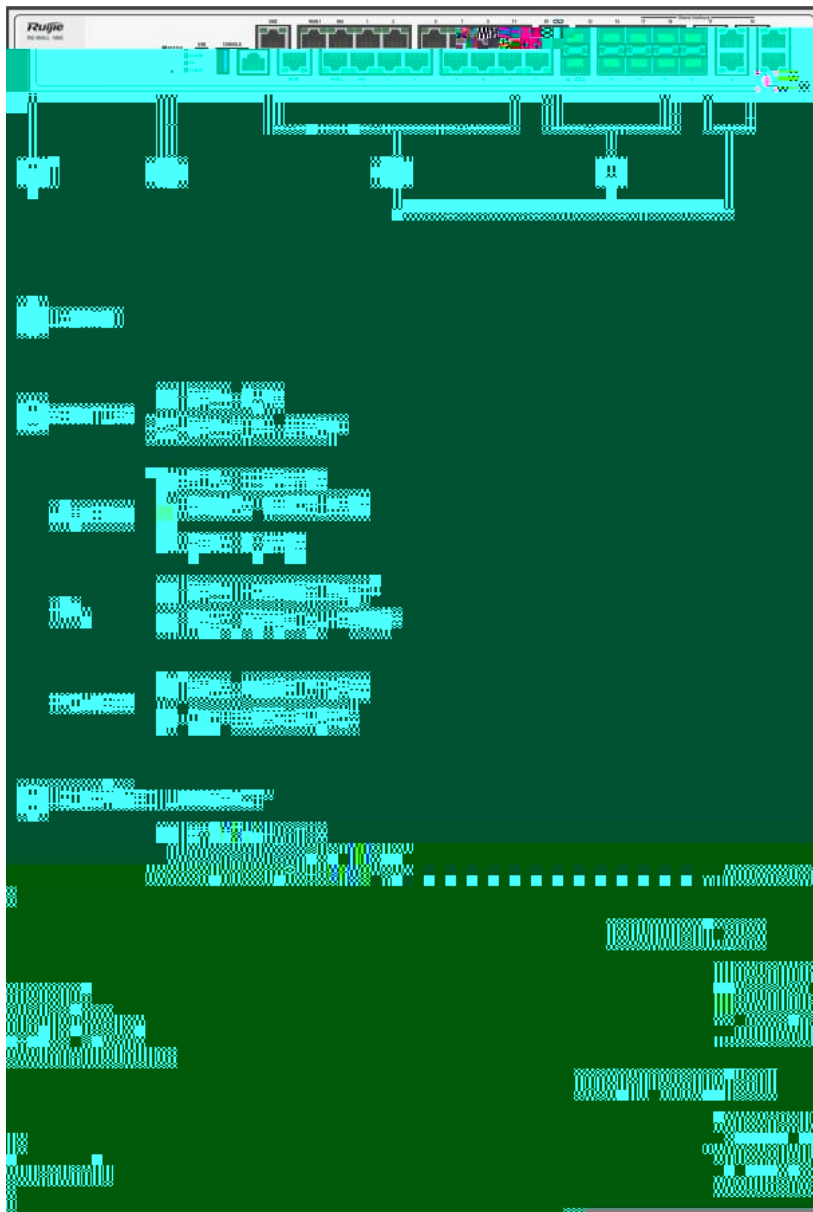
2)

5

5.1

RG-WALL 1600-M5800E

5-1 RG-WALL 1600-M5800E



RG-WALL 1600-M5800E

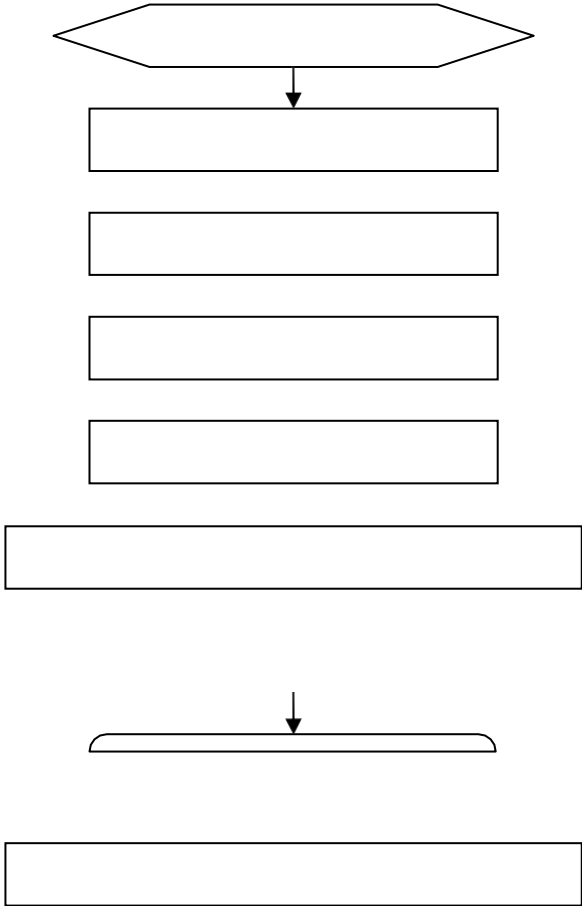
RG-WALL 1600-M5800E
RG-WALL 1600-M5800E

RG-WALL 1600-M5800E

Internet
RG-WALL 1600-M5800E

Telnet

5.2



4

5 **link**

link

1

2

1310nm

1550nm

3

4

A

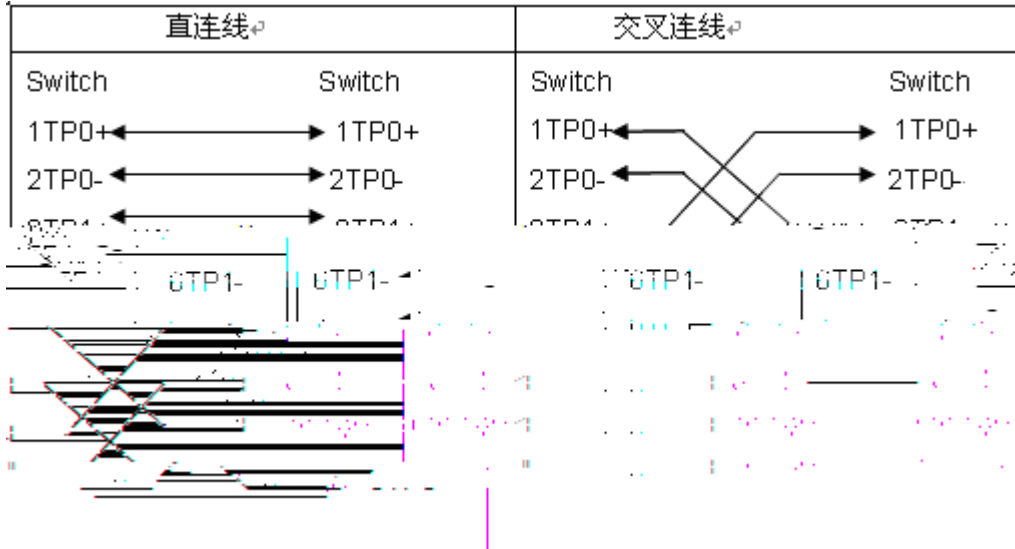
1000BASE-T/100BASE-TX/10BASE-T

1000BASE-T/100BASE-TX/10BASE-T

MDI/MDIX Crossover

1000BASE-T IEEE 802.3ab 100 1000BASE-T 4 100-ohm 5 5 4 UTP STP 1000BASE-T

A-1 1000BASE-T



100BASE-TX/10BASE-T 100-ohm 5 100

10Mbps 100-ohm 3,4,5 100BASE-TX/10BASE-T

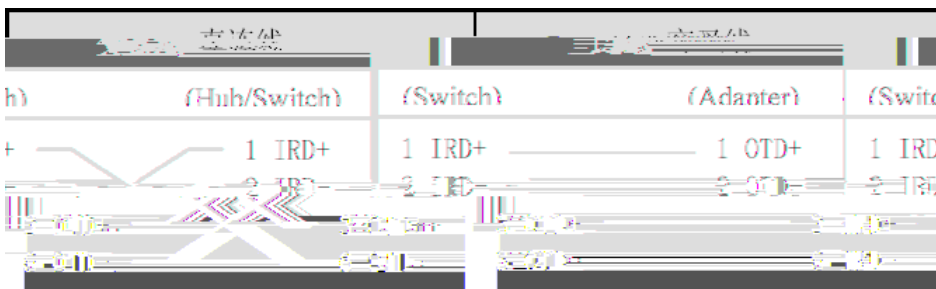
100Mbps

A-2 100BASE-TX/10BASE-T

| Pin | 插座 | 插头 |
|-----|--------------------------|---------------------------|
| 1 | Input Receive Data+ | Output Transmit Data+ |
| 2 | Input Receive Data- | Output Transmit Data- |
| 3 | Control/Receive Data bus | Control/Transmit Data bus |
| 4 | Control/Receive Data bus | Control/Transmit Data bus |
| 5 | Control/Receive Data bus | Control/Transmit Data bus |
| 6 | Control/Receive Data bus | Control/Transmit Data bus |
| 7 | Control/Receive Data bus | Control/Transmit Data bus |
| 8 | Control/Receive Data bus | Control/Transmit Data bus |

100BASE-TX/10BASE-T

A-3 100BASE-TX/10BASE-T



16)

D-3

D-3

17)

18) 220V -48V

19)

- 21)
- 22)
- 23)
- 24)

| mm | mm |
|-------|---------|
| 10 | 80~150 |
| 10~30 | 150~200 |