

RG-S5750-48GT/4SFP-P V5.0

V1.06

2022-06-29

copyright © 2022

1

RG-S5750-48GT/4SFP-P V5.0


RG-S5750-48GT/4SFP-P V5.0

QoS

■ RG-S5750-48GT/4SFP-P V5.0

	10/100/1000Base-T		SFP+	1000Base-X SFP	Console	USB		
RG-S5750-48GT/4SFP-P V5.0	48	POE+	2	2 Combo	1	1(Reserved)	2	

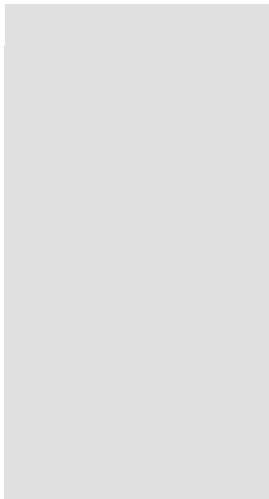
 SFP+ 10Gbase-R 1000base-X

 SFP 1000base-X 100base-X

 1000Base-T 100Base-TX 10Base-T

1.1 RG-S5750-48GT/4SFP-P V5.0

	RG-S5750-48GT/4SFP-P V5.0
CPU	



■ RG-M5000E-AC500P

100-240Vac~

50/60Hz

7-3.5A

HVDC

210VDC

192

1	1	4	2
2	2	5	
3	1		

RG-S5750-48GT/4SFP-P V5.0

	RG-M5000E-AC500P	RG-M5000E-AC500P HVDC
	RG-S5750-48GT/4SFP-P	RG-S5750-48GT/4SFP-P
	100-240V~ 50/60Hz	240VDC
	90~264V~ 50/60Hz	192-290VDC

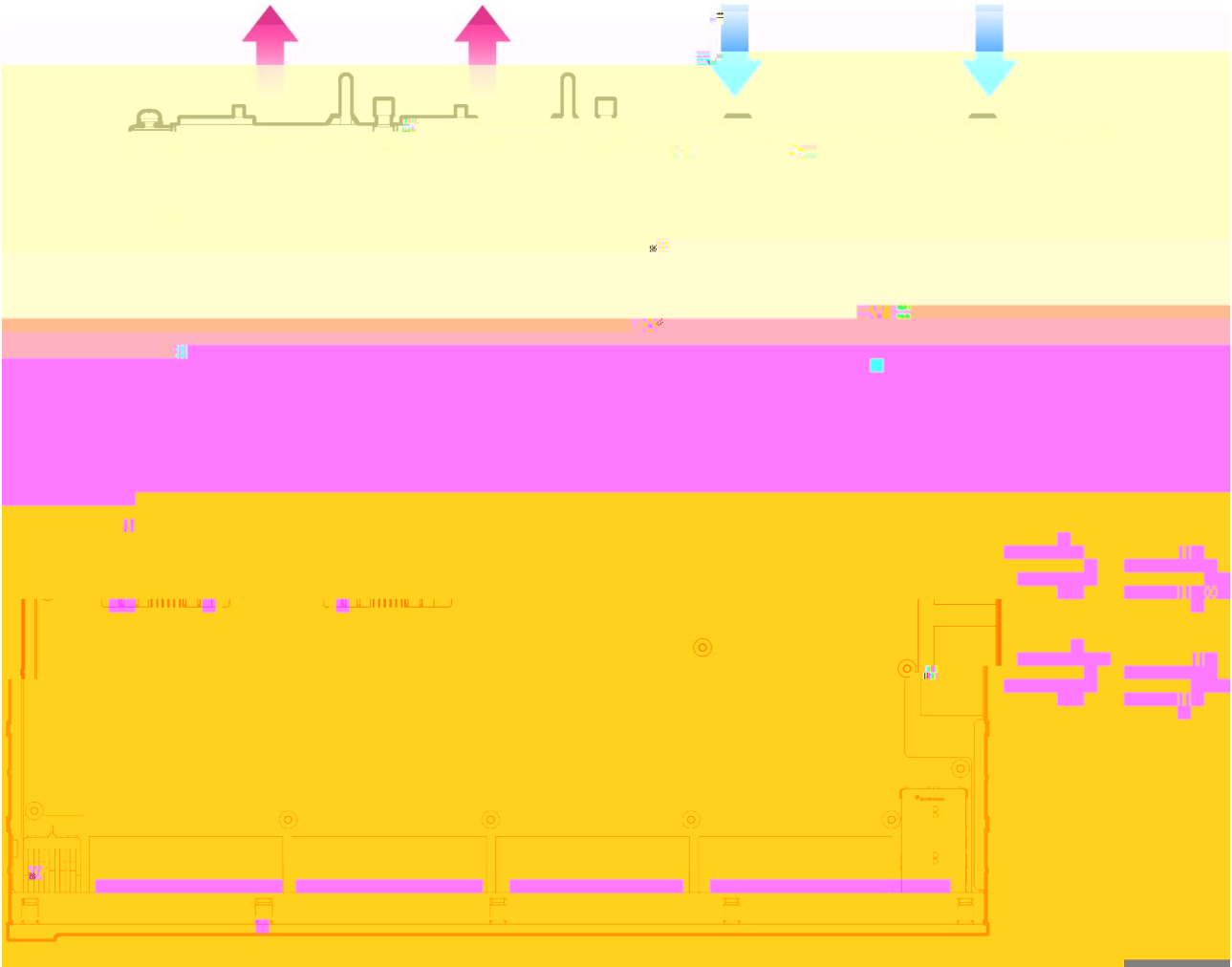
	1+1
	54V -58V ~ -66V 12V 13.2 ~ 15.6V
	54V 7.8A ~ 10A 12V 11A ~ 14A
	RG-M5000E-AC500P
	PD650I
	195.4*90*43.2mm 224.5*90*43.2mm
(* *)	
	1.6kg

1

2

2

1

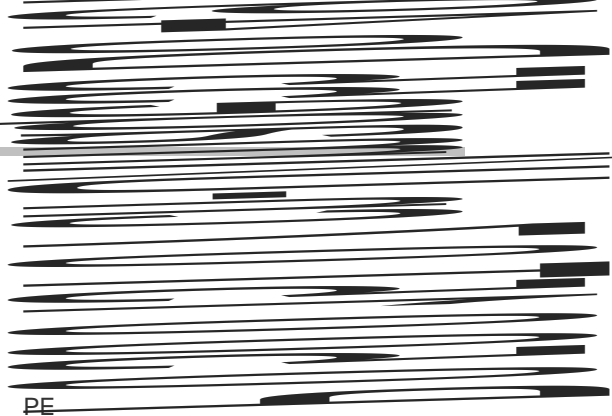


	Status		
			5.2
	M1/M2		
	PWR1/PWR2		AC
PoE	PoE		PoE
1000Mbps RJ-45	1-24		Link

			1000M Link Up
			1000M
			100/10M Link Up
			100/10M
RJ45 PoE	1~48		PoE
			PoE
			PoE
			Link

1000Mbps SFP

47F-48F



2.1.4

-
-
-

PE

2.1.5

RG-S5750-48GT/4SFP-P V5.0

I

-
-

μ

2.1.6

/

2.2.5

RG-S5750-48GT/4SFP-P V5.0

	0.75	18AWG		
3			0.75	18AWG

1	RG-S5750-48GT/4SFP-P V5.0	1	2-1
---	---------------------------	---	-----

2.2.6

RG-S5750-48GT/4SFP-P V5.0



2.2.7 EMI

EMI

-
-
-
-

2.3

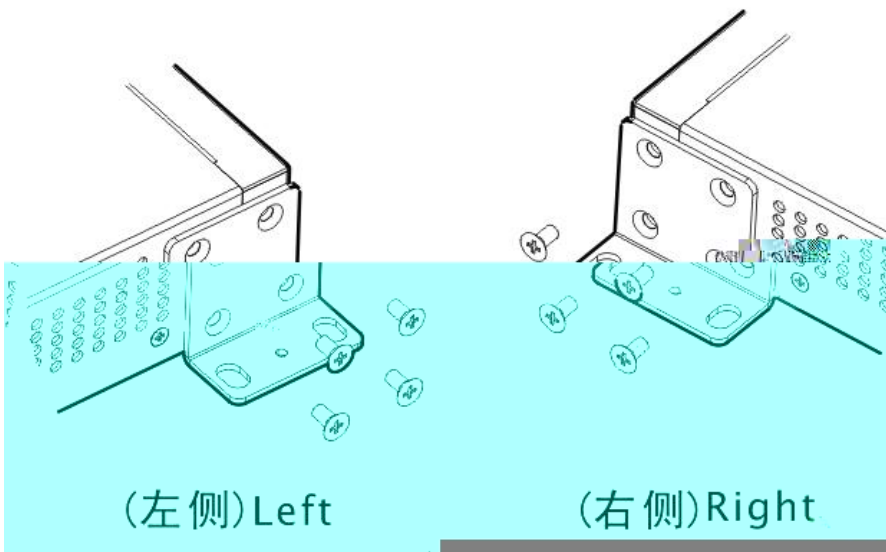


3-3

3.3.2

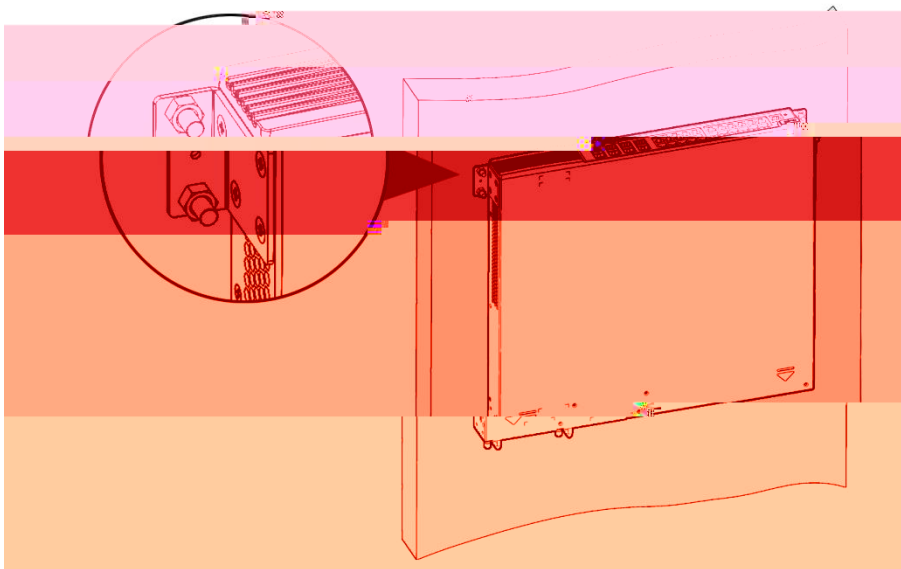
RG-S5750-48GT/4SFP-P V5.0

UASIDE



3-5

3-5



3.3.3

19

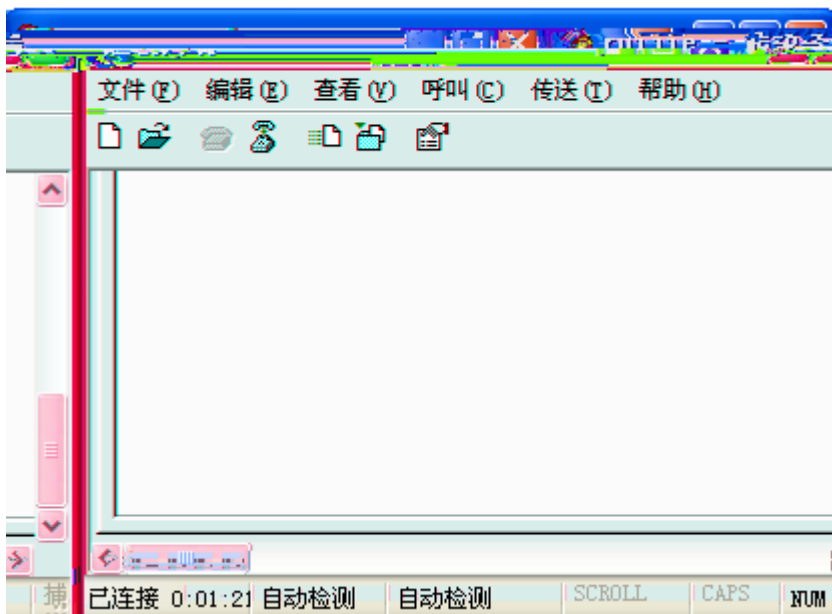
4

3-6

3-6

3-7

3-7



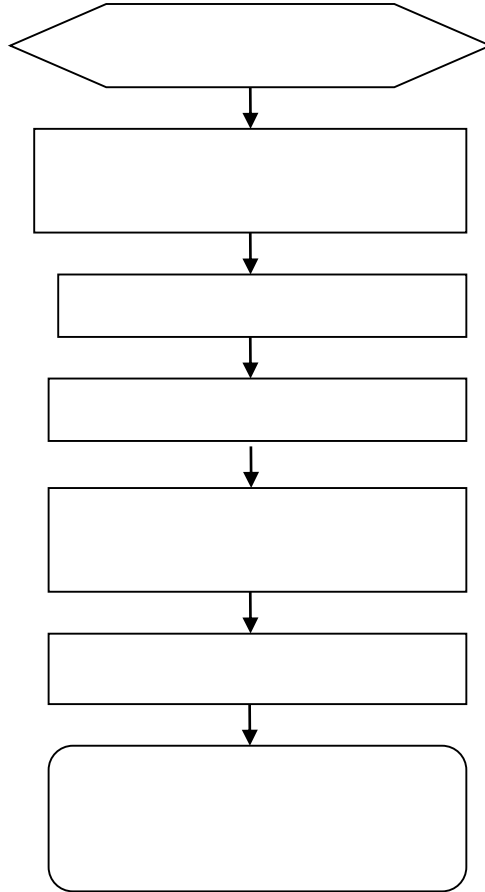
4.2

-
-
-
- PC console

-
-
-
-
-

5

5.1



5.2

status		

Status		
RJ45	100	

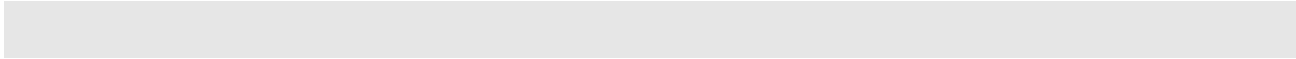
A —

1000BASE-T/100BASE-TX/10BASE-T

1000BASE-T/100BASE-TX/10BASE-T

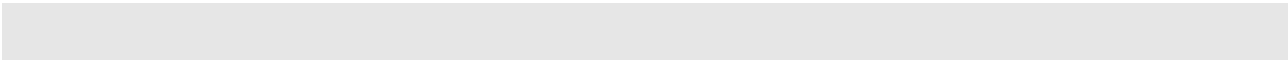
MDI/MDIX Crossover

1000BASE-T	IEEE 802.3ab STP	100	100-ohm 5	5	UTP	STP
1000BASE-T A-1	4		4	1000BASE-T		
A-1 1000BASE-T						



Switch	Switch	Switch	Switch
1 TP0 +	1 TP0 +	1 TP0	

A-3 100BASE-TX/10BASE-T



Switch

Switch

Switch

Switch

1 IRD +

B — Mini-GBIC SFP+

Mini-GBIC-LH40	1310		9/125	40km
Mini-GBIC-ZX50				50km
Mini-GBIC-ZX80	1550		9/125	80km
Mini-GBIC-ZX100				

			50	2000	300m				
				500	82m				
				400	66m				

XG-SFP

C —

C-1



1)

2)

3)

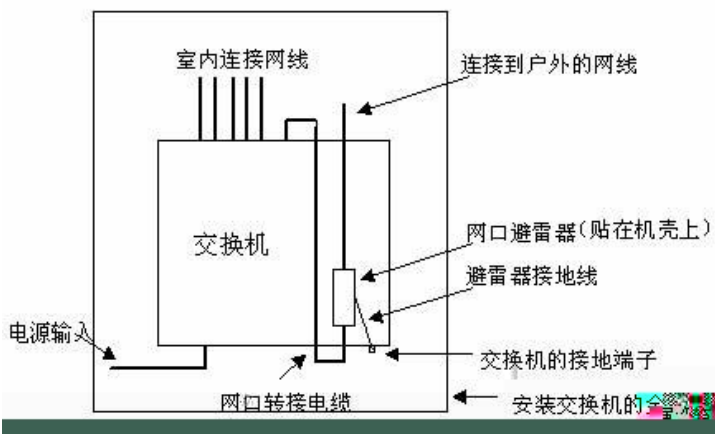
4)

OUT

IN

5)

C-2



10/100M

RJ-45



“IN”

“OUT”



D —

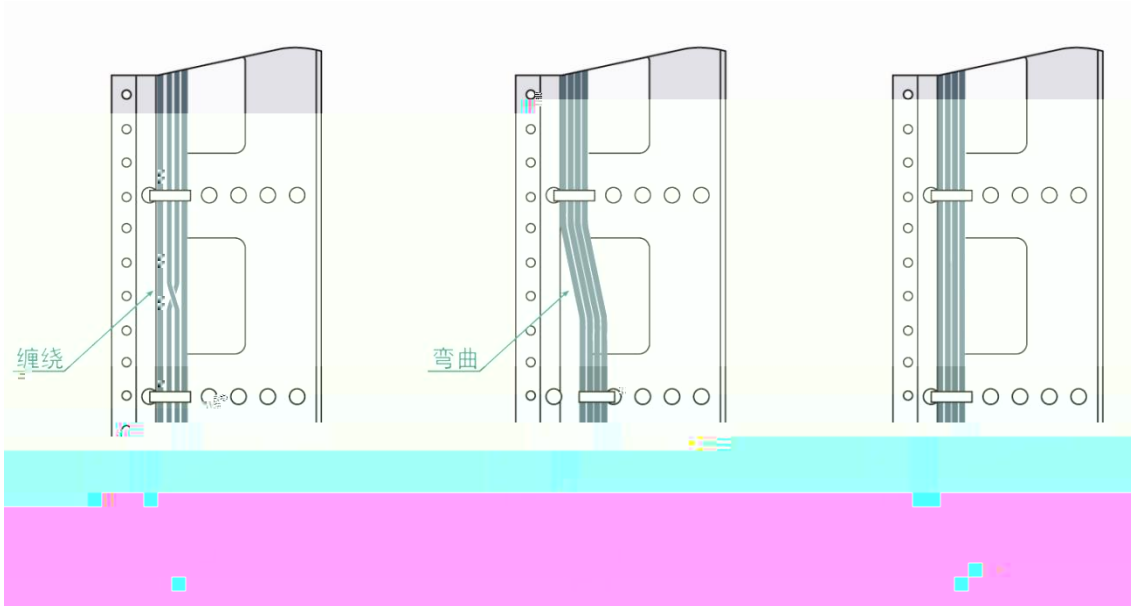
RG-S5750-48GT/4SFP-P V5.0

19

- 5
- 7
- 7 10
- SFP+ 5 10

- 25
- 20
- 10

-



■

30mm

■

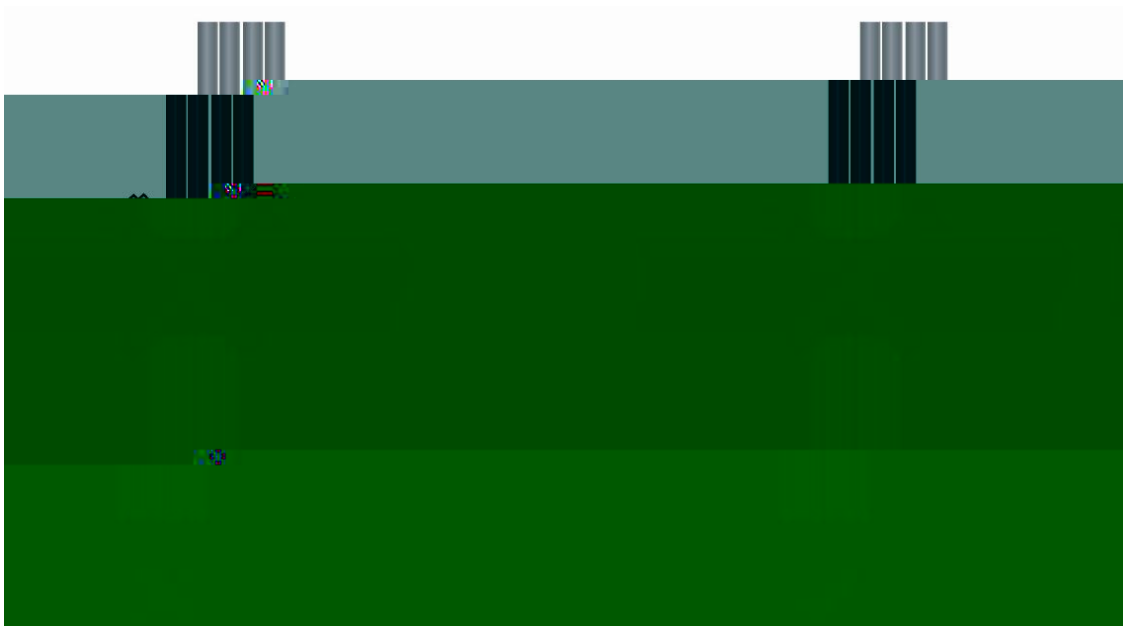
■

■

■

D-2

D-2

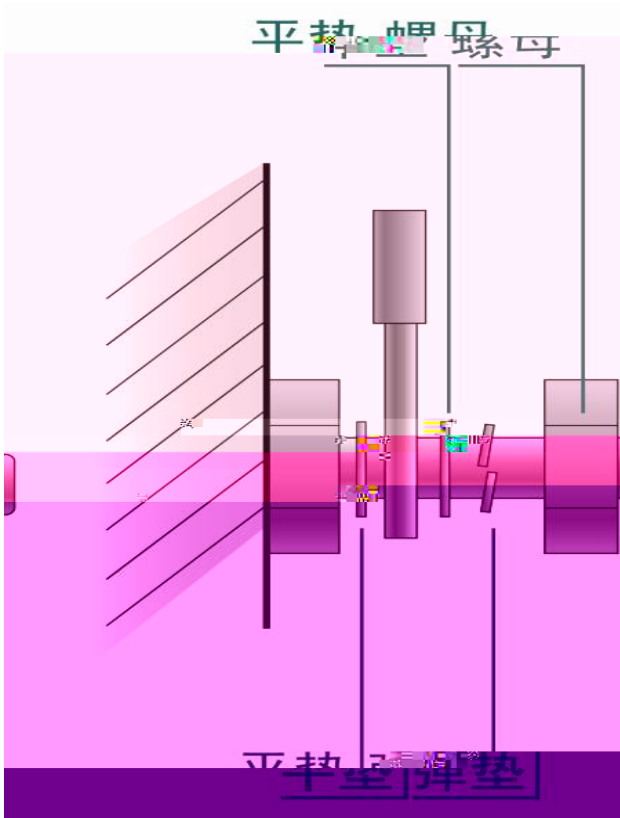


■

D-3

D-3

■



-
-
-
-

mm	mm
10	80~150
10~30	150~200
30	200~300

-
-

E ———

- 3.7km 5km 2km
- 3.7km
-
-
-
-
-
-
- 600mm
-
-
-
-
-