

1

RG-ShareBox 2 RG-ShareBox100 RG-ShareBox50
RG-ShareBox50

U

RG-ShareBox100	U HDMI 4K 1080P 1000Base-T RS232 POE USB
RG-ShareBox50	HDMI 4K 1080P 1000Base-T RS232 POE USB U

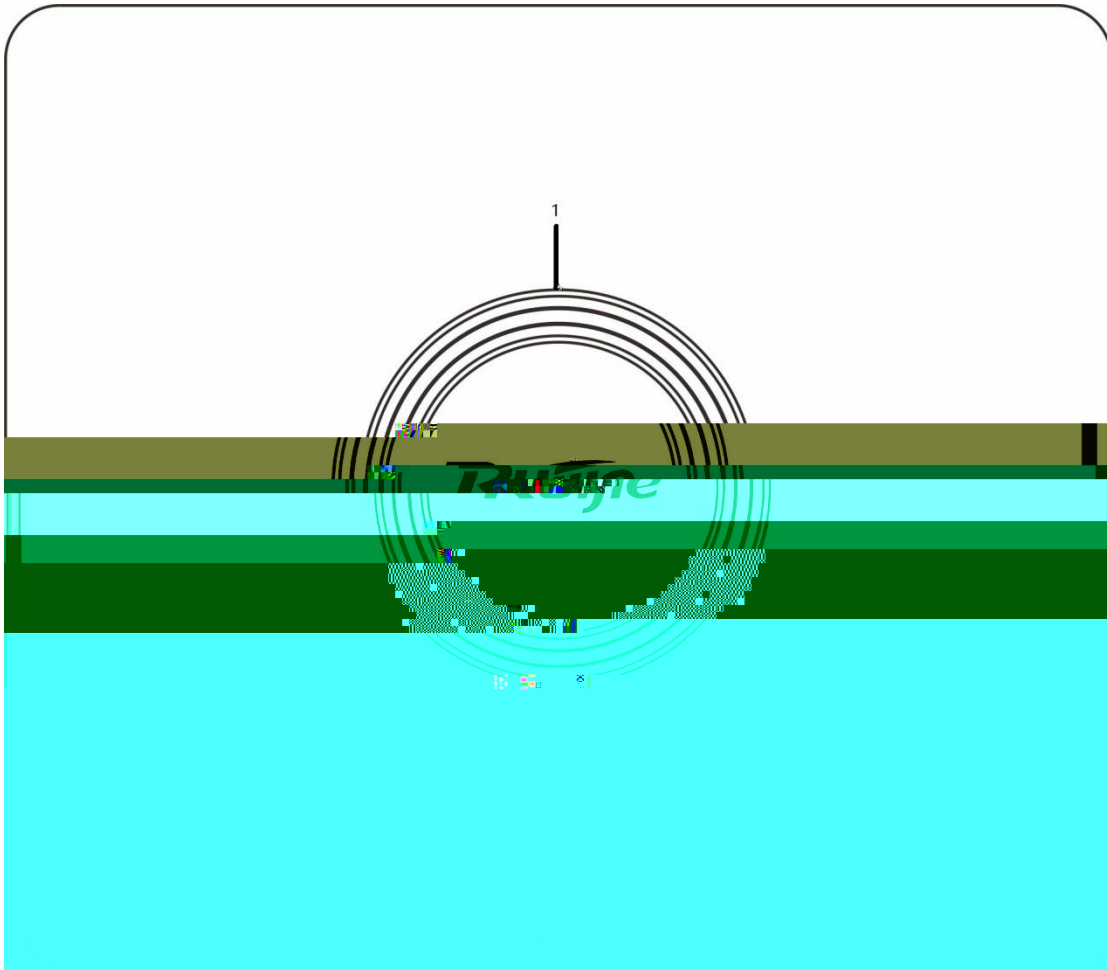
 1000Base-T 100Base-TX 10Base-T

1.1 RG-ShareBox

	RG-ShareBox100/ RG-ShareBox50		
CPU	RK3399	(2XA72+4XA53)	1.992GHz
BOOTROM	/		

	1	RSR232		
	2	HDMI		4K/60
	2	USB2.0	OTG	
	2			
	■	POE		
		48VDC		
		0.375A		
	■			
		12		

1-2RG-ShareBox



1

RG-ShareBox

2

POE

- 48VDC
- 0.375A

- 12VDC
- 1.5A

RG-ShareBox



2

2.1



2.1.1



2.1.2



2.1.3



2.1.4

-
-

2.1.5

/

18

24

2.2

2.2.1

10cm

2.2.2

logo

2

2.2.3

-
-
-

RG-ShareBox

0°C-40°C	5%-95%



1.5m

0.4m

2.2.4

0.5µ m	/m3	3.5× 106
5µ m	/m3	3× 104

	(mg/m3)	(mg/m3)
SO2	0.3	1.0
H2S	0.1	0.5
NO2	0.5	1.0
Cl2	0.1	0.3



30

2.2.5

RG-ShareBox

-
-
-

2.2.6

RG-ShareBox



2.2.7 EMI

EMI

-
- -
 -

2.3



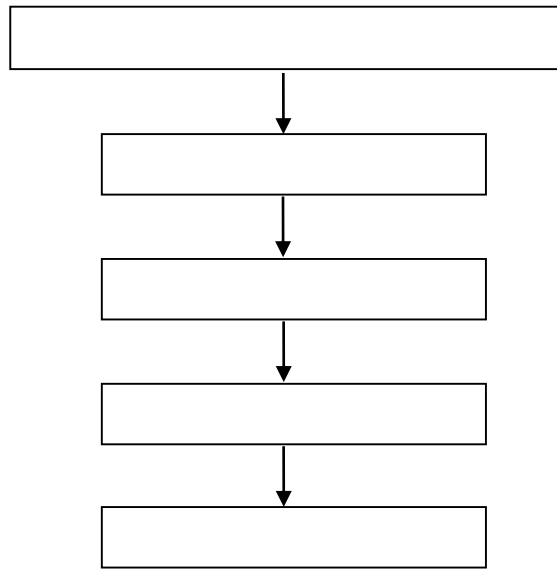
3



" "



3.1



3.2

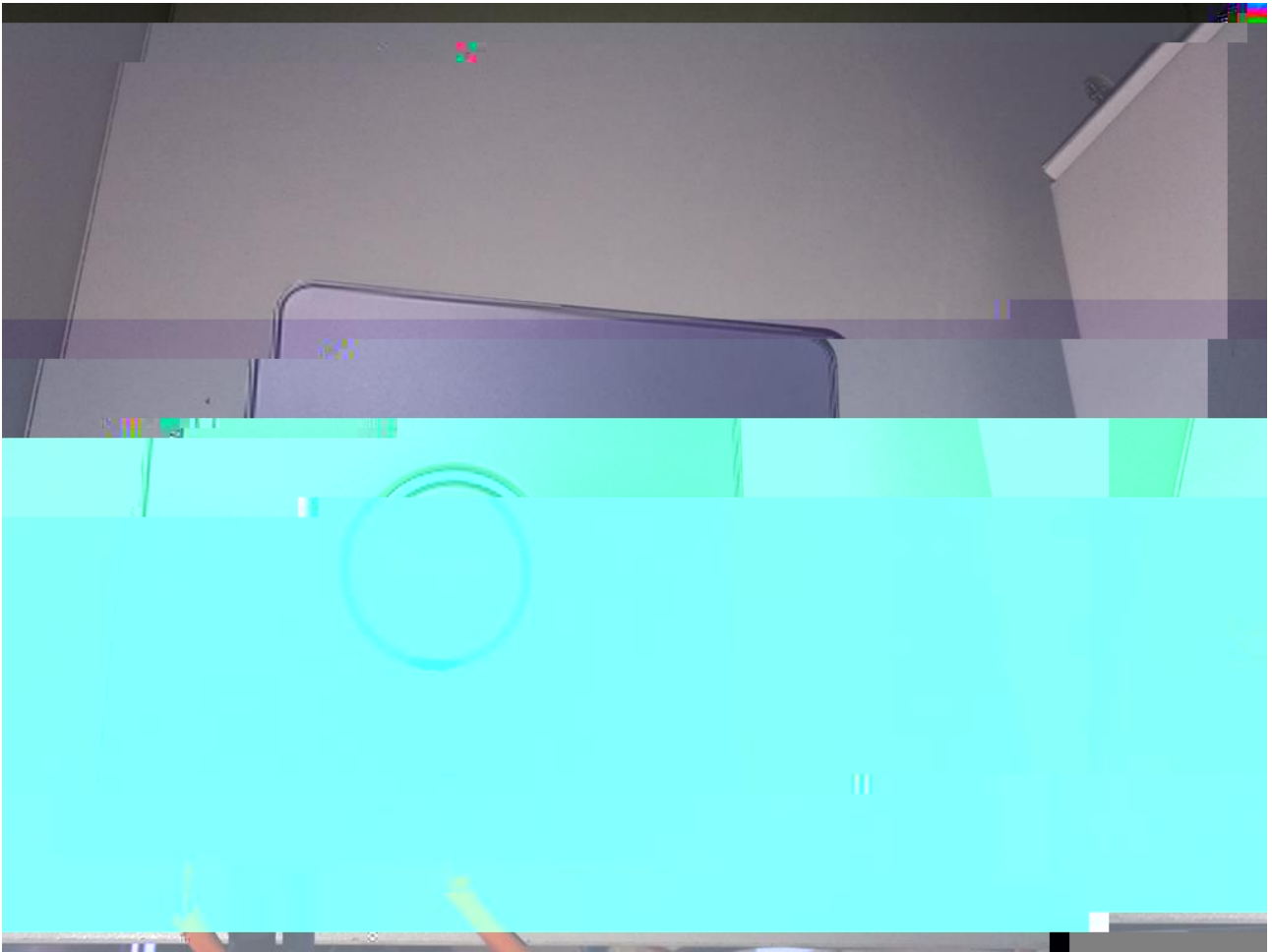
-
-
-
-
-

3.3 RG-ShareBox

-
- -
 -
 -
 -

10

3.3.1



&

3.4

-
-
-

10

4

4.1

4.2

	POE	POE
RJ45	100 4.2 4.2	

A

1000BASE-T/100BASE-TX/10BASE-T

1000BASE-T/100BASE-TX/10BASE-T

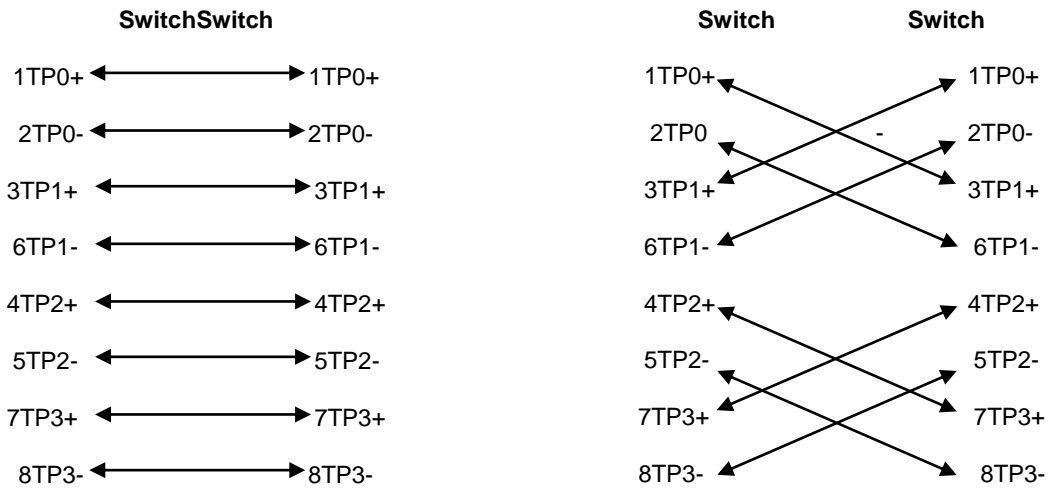
MDI/MDIX Crossover

1000BASE-T IEEE 802.3ab 100-ohm 5 5 UTP STP
STP 100

1000BASE-T 4 4 1000BASE-T

A-1

A-1 1000BASE-T



100BASE-TX/10BASE-T

10Mbps

100-ohm 3 4 5
100BASE-TX/10BASE-T

100Mbps

100-ohm 5

100

A-2

A-2 100BASE-TX/10BASE-T

Pin		
1	Input Receive Data+	Output Transmit Data+
2	Input Receive Data-	Output Transmit Data-
3	Output Transmit Data+	Input Receive Data+
6	Output Transmit Data-	Input Receive Data-
4 5 7 8	Not Used	Not Used

100BASE-TX/10BASE-T

A-3

A-3 100BASE-TX/10BASE-T

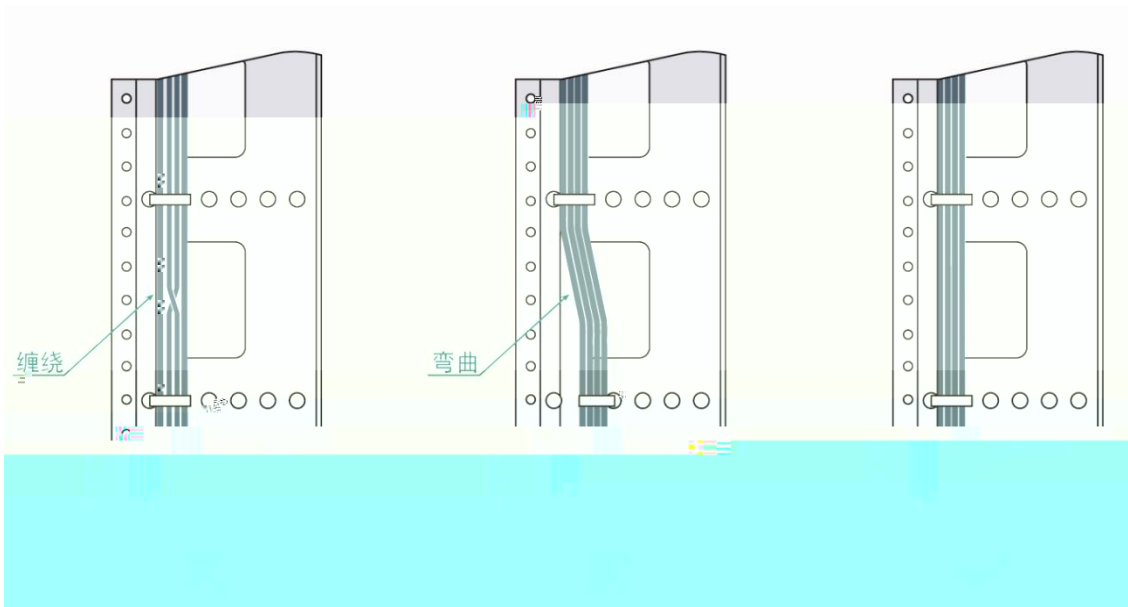


B

RG-ShareBox

- 7 5
- 7 10
- HDMI 5 10
-
- B-1

B-1

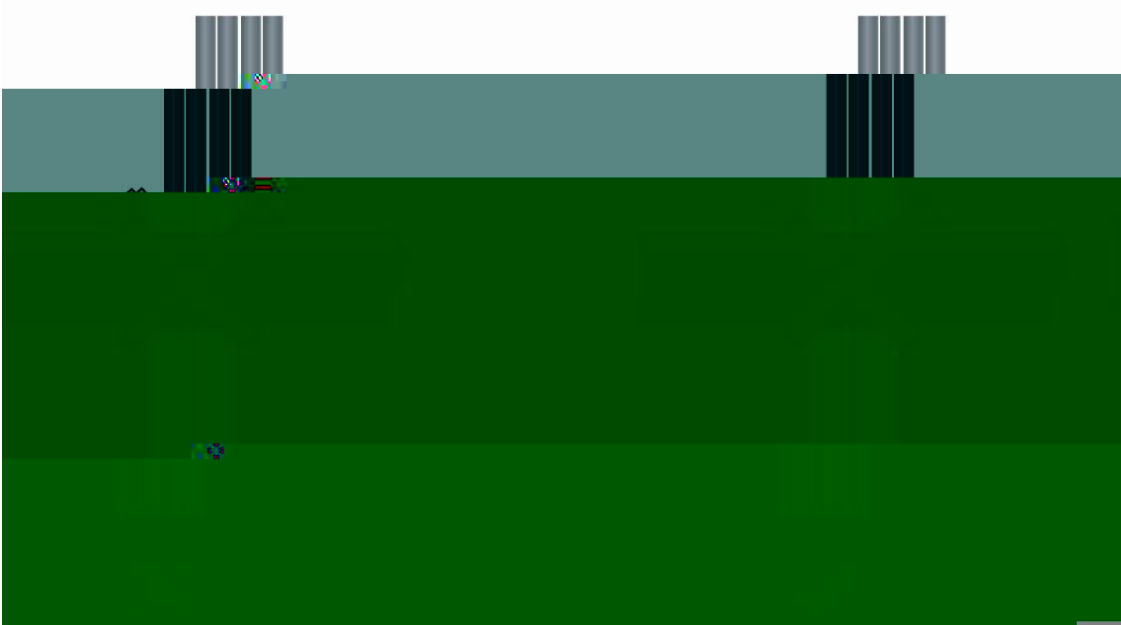


- 30mm
-
-

-
-

D-2

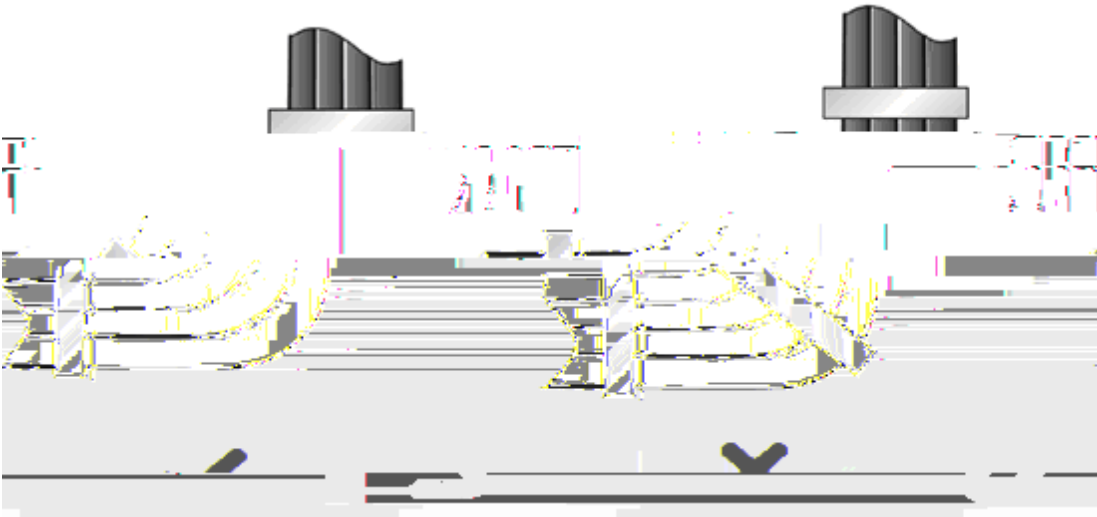
B-2



-

D-3

B-3



-
-
-

