

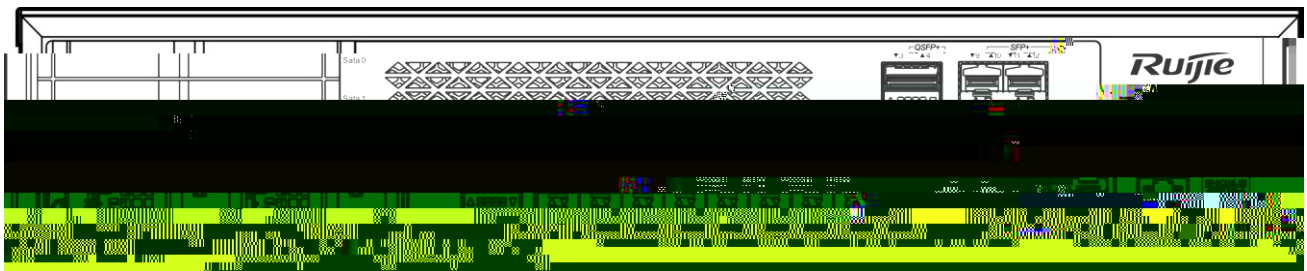
copyright © 2024



RG-WS7880

WLAN

1-1



POWER	
SYS	
FAN	
	LINK
	link

× ×	560mm×440mm×88.1mm
	2U
	15kg

	<p>8 1G</p> <p style="text-align: center;">10/100/1000Base-T</p> <p style="text-align: center;">8 MGMT</p> <p>12 10G SFP+</p> <p>4 40G QSFP+</p> <p style="text-align: center;">1 QSFP+ 4 10G 13~16</p> <p style="text-align: center;">2 QSFP+ 4 10G 17~20</p>
	<p>1 RJ45 Console</p> <p>1 USB</p>
	1

-
-
-
-
-
-
-
-
-
-

UPS

10

/

18

24



15 ~30	0 ~45	40%~65%	10%~90%



1.5m

0.4m



48

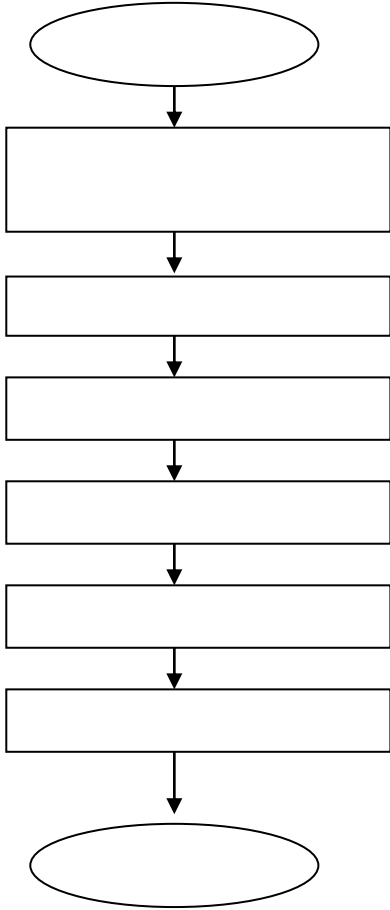
15



5

μm	0.5	1	3	5
----	-----	---	---	---

RG-WS7880



RG-WS7880

RG-WS7880

RG-WS7880

RG-WS7880

■

■

RG-WS7880

10cm

RG-WS7880

DB-9

RG-WS7880

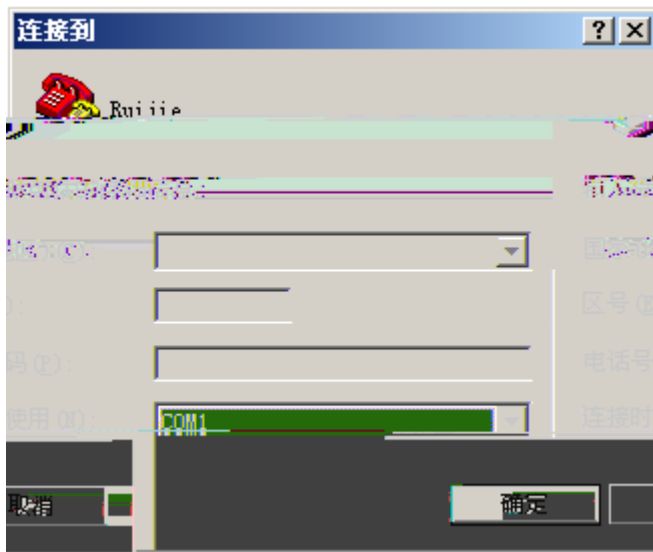
■

■

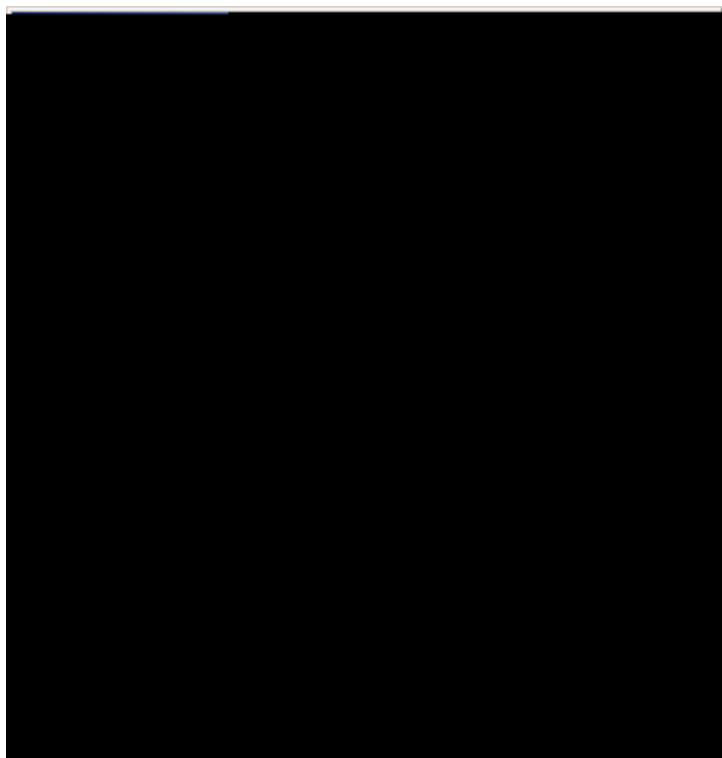
■

■

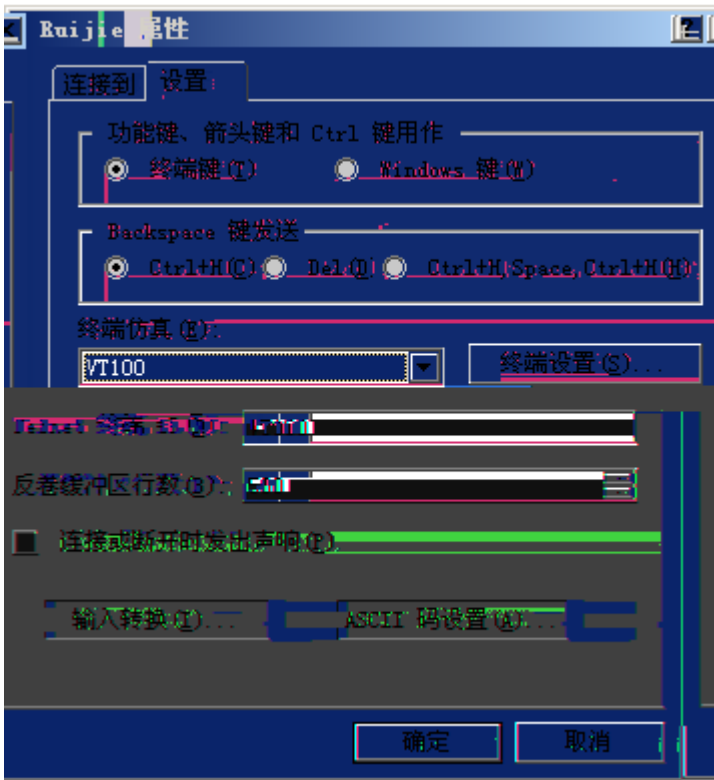
AC	Console	AC
■88sole	RS232	RG-WS7880



4-3



4-4



RG2 TJ ET BT 1 0 0 1 783-262783 DD 2>> 0 0 rg2>> 0 0 RG 289.461Tm [()] TJ ET TJ ET BT 1 0 0 7 /0.1262MCIDD 2> 9 Tf 1 0

RG-WS7880

-
-
-

RG-WS7880

”

■ RG-WS7880

" "

■

RG-WS7880

RG-WS7880

RG-WS7880

```
*****
Boot 1.2.6-00386-g6849a86 (Build time: Oct 13 2014 - 17:40:17)

DRAM: 16 GiB
NAND: 512 MiB
Flash: 8 MiB
SETMAC: Setmac operation was performed at 2015-03-04 16:42:48 (version: 11.0)
Press Ctrl+C to enter Boot Menu
Bootloader: Done loading app on coremask: 0xffffffff
Starting Devices Initializations... [ OK ]

adding user rgosm...
adding user guest...
adding user sslvpn...
adding user postgres...
insmod: cannot insert `/sbin/rg-console.ko': File exists (-1): File exists*Mar  4 16:46:37: %SYS-5-AC_POWER_ON:
System coldstart.

Press RETURN to get started
Ruijie>
```

RG-WS7880



RG-WS7880

RG-WS7880
