

SATA
POWER

||

||



copyright © 2021



<http://www.ruijie.com.cn/>

<http://webchat.ruijie.com.cn>

<http://www.ruijie.com.cn/service.aspx>

7× 24

4008-111-000

<http://www.ruijie.com.cn/service/know.aspx>

4008111000@ruijie.1021210302033A462007T0 0 1 rg140.66 469.87 171.14 0.60001840 1 rg0T/ C

1

RG-DDI

RG-DDI

1.1 RG-DDI1000

	RG-DDI1000
	DDR3 SDRAM 2GB
	BOOTROM 8MB
	FLASH 512MB
	SATA 500G
I/O	8 10/100/1000M 0/0, 0/1, 0/2, 0/3, 0/4 0/5 0/6, 0/7 0/6, 0/7 1000BASE-SX/LX/ZX
	mini GBIC GE-SFP-LX20/LH40-BIDI
	1
	1
	USB 2
	1
	10Base-T/100Base-TX/1000Base-TX 1000BASE-SX/LX/ZX
	RS-232
x x mm	440x43.6x200
	100-240V~ 50-60Hz
	40W
	-5° ~50
	10~90%RH

U

USB

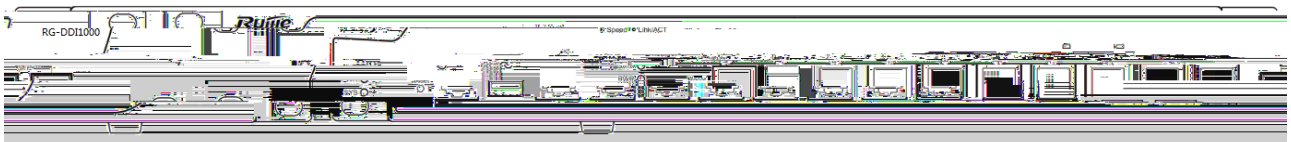
U

U

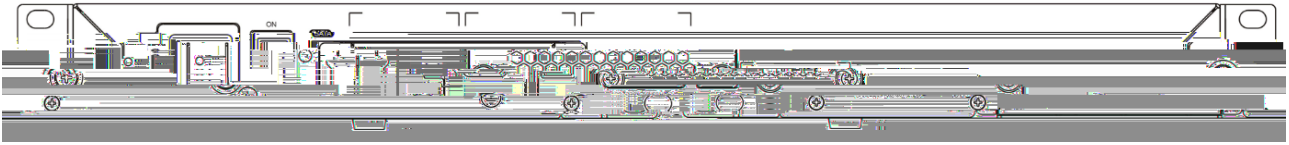
FAT32

RG-DDI1000

1-1 RG-DDI1000



1-2 RG-DDI1000



PWR			
SYS			
SATA			
0-7	Link/ACT	/ /	Link
0-7	speed	/	
6F-7F		Link	

1.2 RG-DDI2000

	RG-DDI2000
I/O	DDR3 SDRAM 16GB
	BOOTROM 8MB
	FLASH 512MB
	SATA 500GB
	8 10/100/1000M 1000BASE-SX/LX/ZX mini GBIC

	10Base-T/100Base-TX/1000Base-TX 1000BASE-SX/LX/ZX
	RS-232
× × mm	440×88.1×560
	100-240V~ 50-60Hz

X/ZX mini GBIC	GE-SFP-LX20/LH40-BIDI	
2	0/0, 0/1, 0/2, 0/3	3
	XG-SFP-SR-MM850	XG-SFP-LR-SM1310

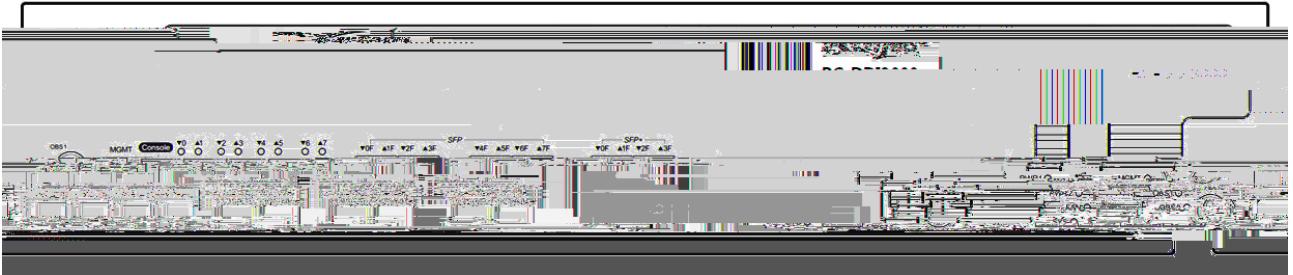
/1000M	

2	
1	SATA

-TX/1000Base-TX	1000BASE-SX/LX/ZX
32	

U USB U U FAT32
 RG-DDI3000

1-5 RG-DDI3000



1-6 RG-DDI3000



PWR1 PWR2	
SYS	
FAN	
SATA	
Link	Link
ACT	
0-7	Link / Link
0F-7F	Link

OBS0 OBS1 BYPASS	

1.4

1.4.1 RG-PA300I

1-7 RG-PA300I



RG-PA300I

RG-DDI2000, RG-DDI3000

IN	
OUT	
FAIL	

	100-240V~ 50-60Hz 6.5A
	12V 1 25A 12VFAN 0 5A
	300W
N+1	
	-5 50 ±2

2

2.1

UPS

10

2

2.2.1 /

		"	"
15 ~30	0 ~45	40%~65%	10%~90%
		1.5m	0.4m
	48	15	
			5

2.2.2

	0.5	1	3	5
	1.4×10 ⁷	7×10 ⁵	2.4×10 ⁵	1.3×10 ⁵

	mg/m ³	mg/m ³
Ä		

2.2.4

2.2.5

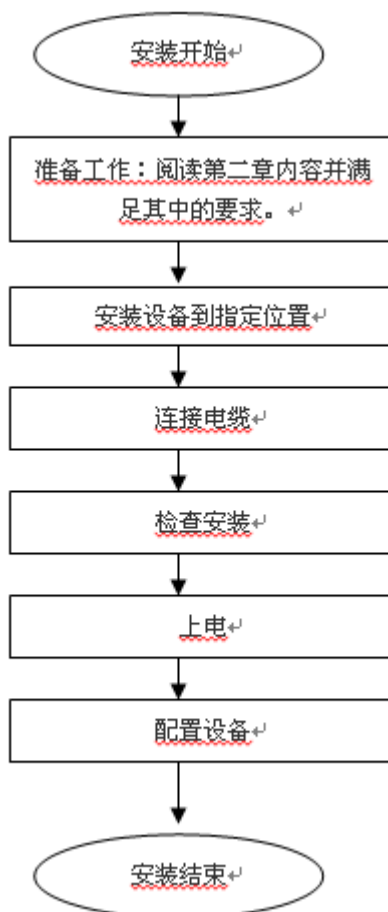
19"

2.3

	HUB PC

3

3.1



3.2

10cm

3.3

RG-DDI

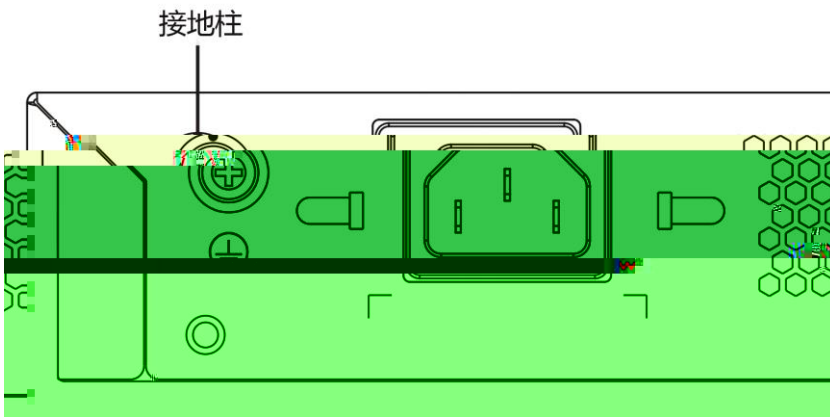
100-240V~/50-60Hz

3.4

RG-DDI

1

3-1 RG-DDI



3.5

RG-DDI

EIA/TIA-232

Console

WEB

	RJ-45		
	EIA/TIA-232		
	9600bps	57600bps	115200bps
	1.		
	2.		

	3.
--	----

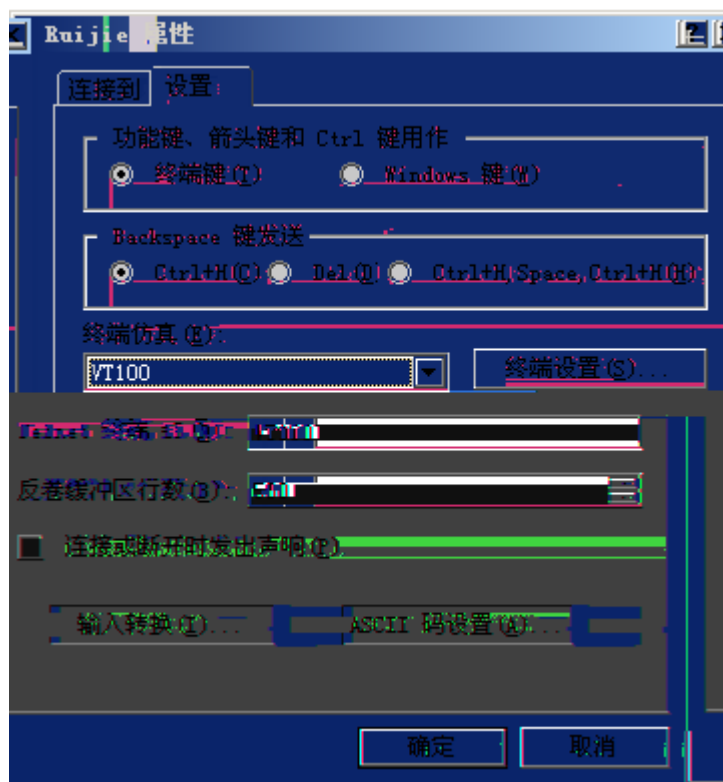
DB-9

3.6

4-3



4-4



4.2

" ON"

" "

```
00:00:00:00: %MTD_DRIVER-5-MTD_NAND_FOUND: 1 NAND chips(chip size : 33554432) detected
00:00:00:00: %MTD_DRIVER-5-MTD_NAND_FOUND: 1 nand chip(s) found on the target.
00:00:00:17: %LINK-5-CHANGED: Interface FastEthernet 0/1, changed state to up
00:00:00:17: %LINEPROTO-5-UPDOWN: Line protocol on Interface FastEthernet 0/1, changed state to up
00:00:00:17: %LINK-5-CHANGED: Interface FastEthernet 0/0, changed state to up
00:00:00:17: %LINEPROTO-5-UPDOWN: Line protocol on Interface FastEthernet 0/0, changed state to up
00:00:00:31: %SYS-5-COLDSTART: System coldstart.
Ruijie>
```

4.3

5

5.1

RG-DDI1000 RG-DDI2000 RG-DDI3000

PWR

PWR

5.2