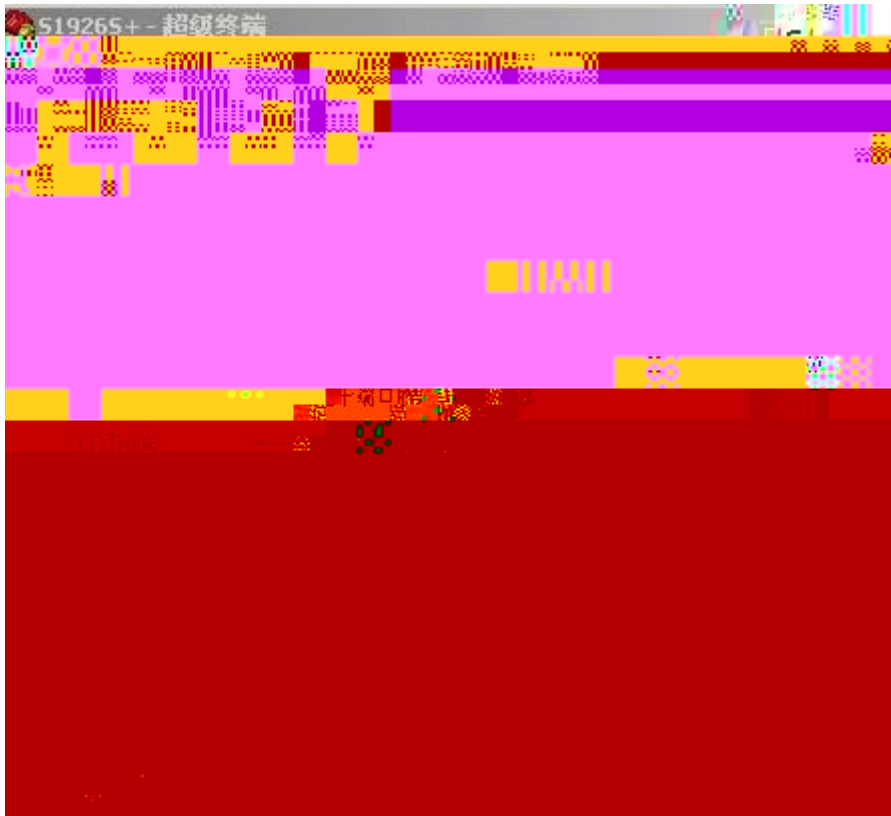


2

3

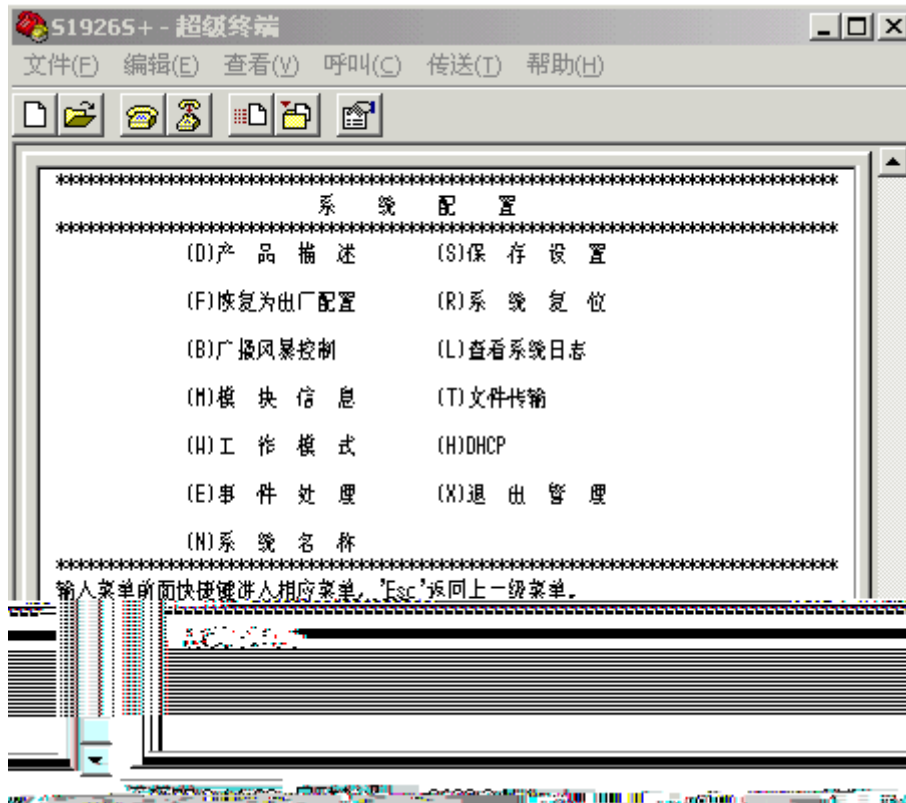
GB Chinese

1

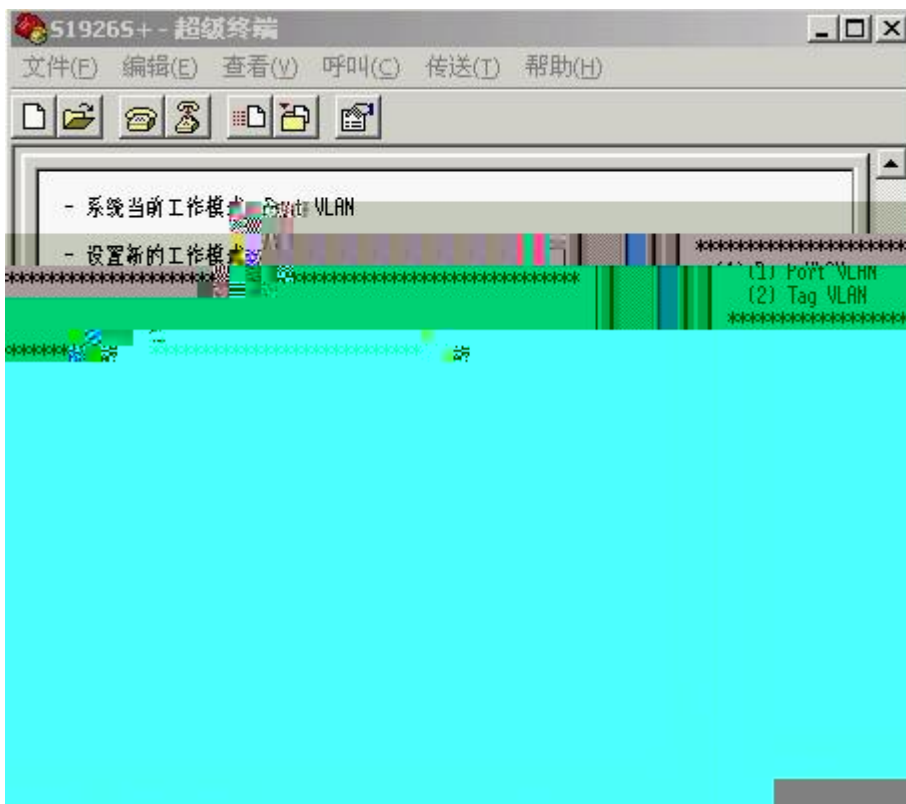


4

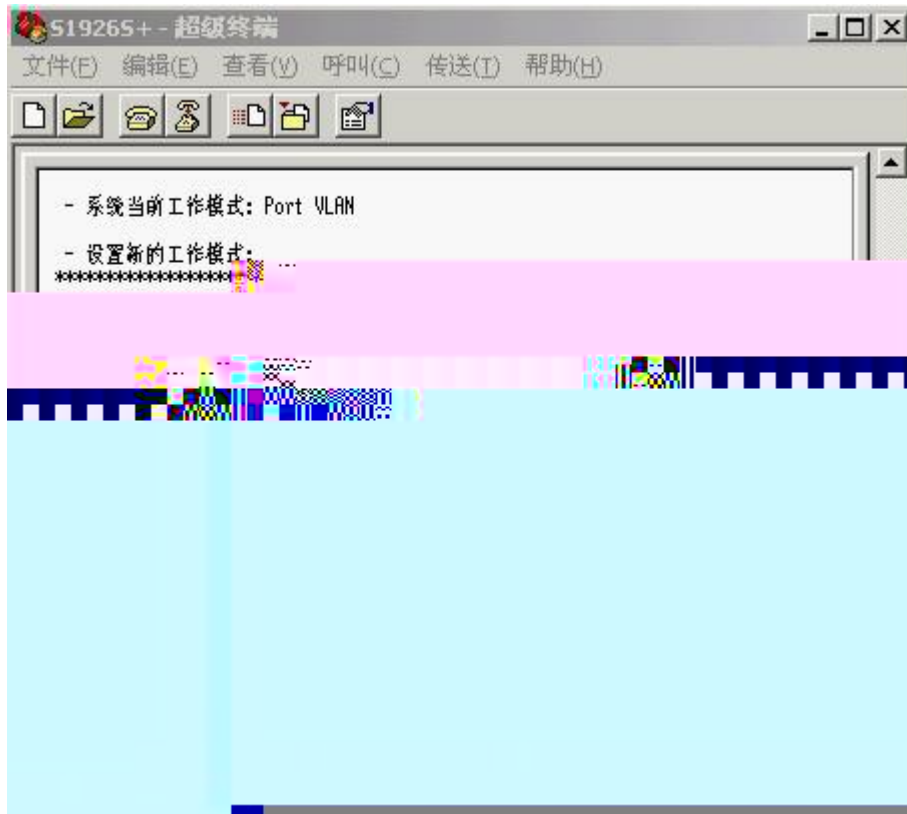
(S)



5 (W)

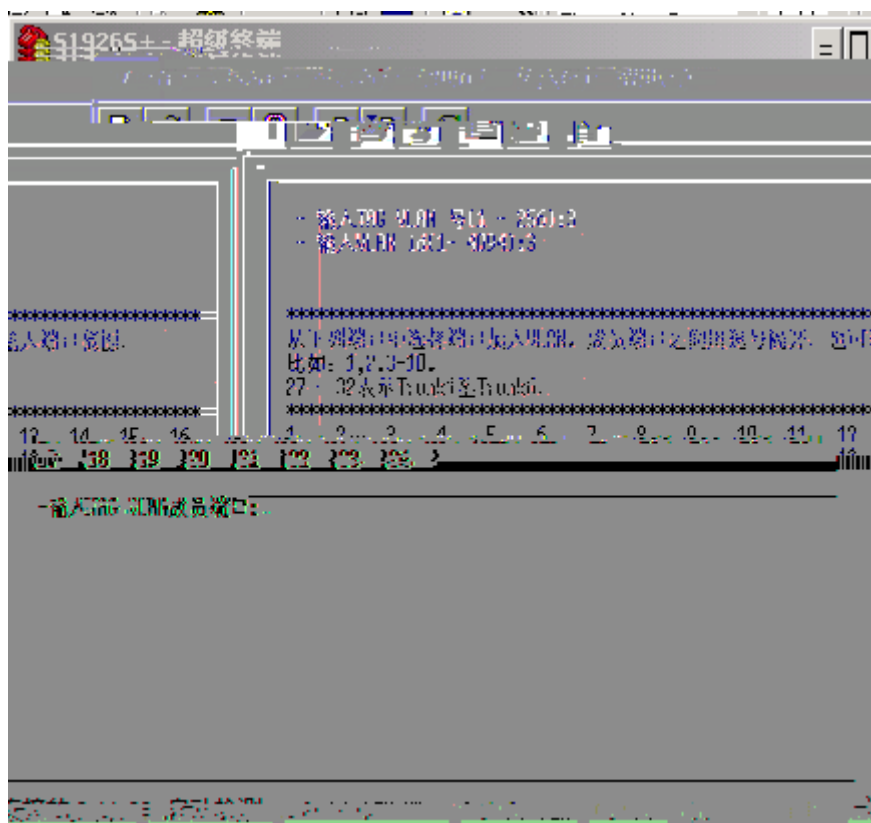


6 2 Tag VLAN

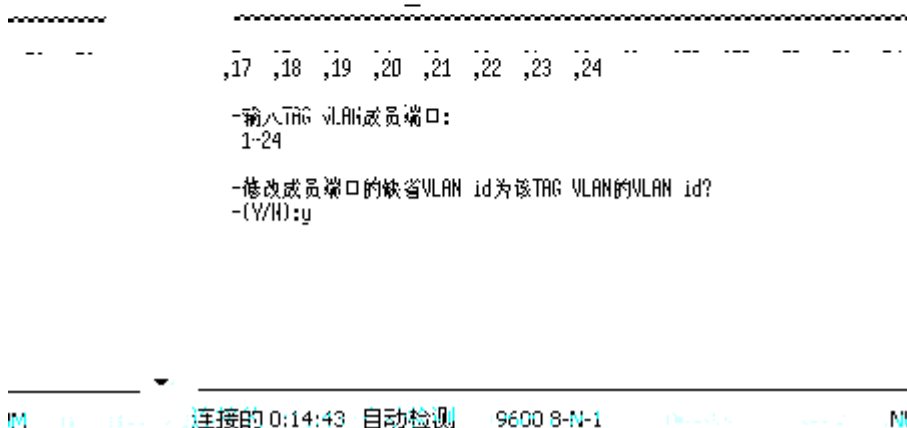
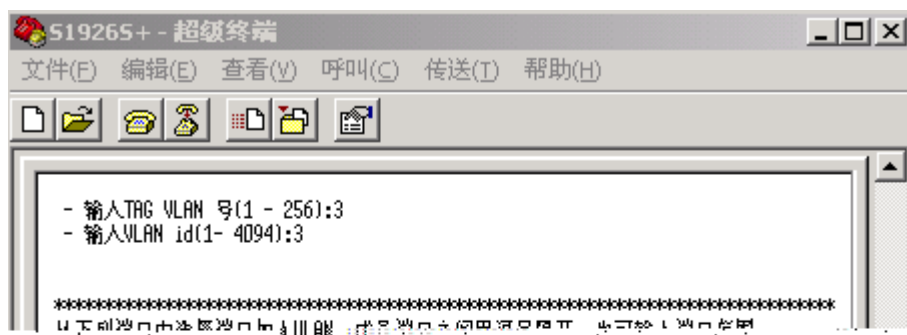


```
. ESC
VLAN 3 1-24 VLAN 3 2 ,
VLAN TAG CISCO TRUNK
UNTAG (CISCO access )
```





- 3 TAG VLAN 3, vlan 3
- 4 VLAN id 3, vlan id 3 vlan vlan id

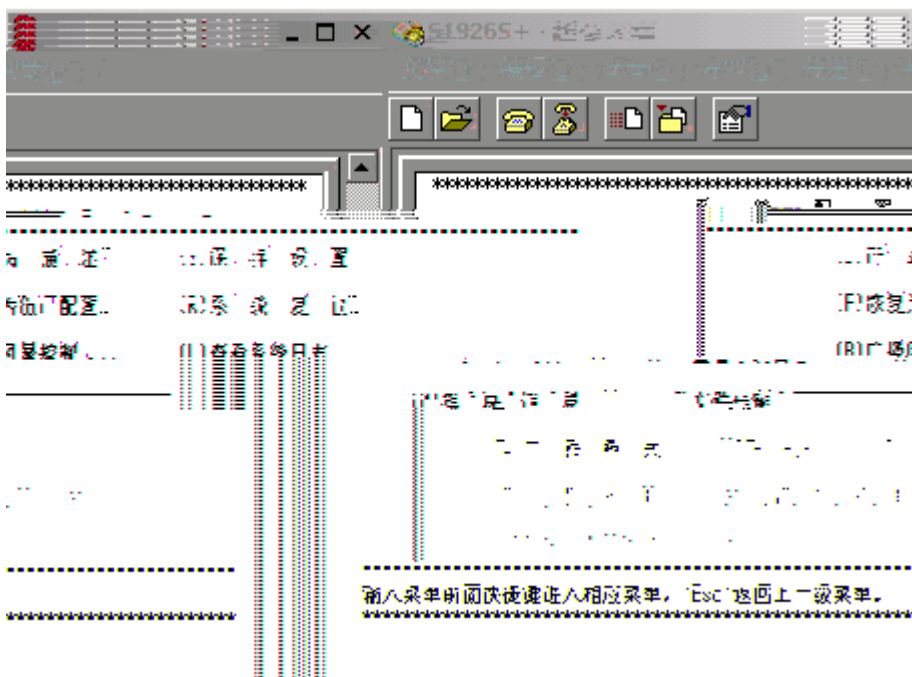


---

5	VLAN	1-24	1-24	v1A1U20(8uR1A
---	------	------	------	---------------

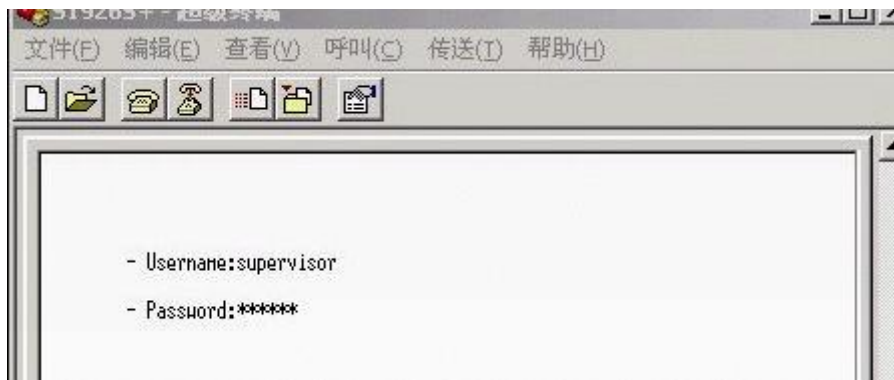


11 S

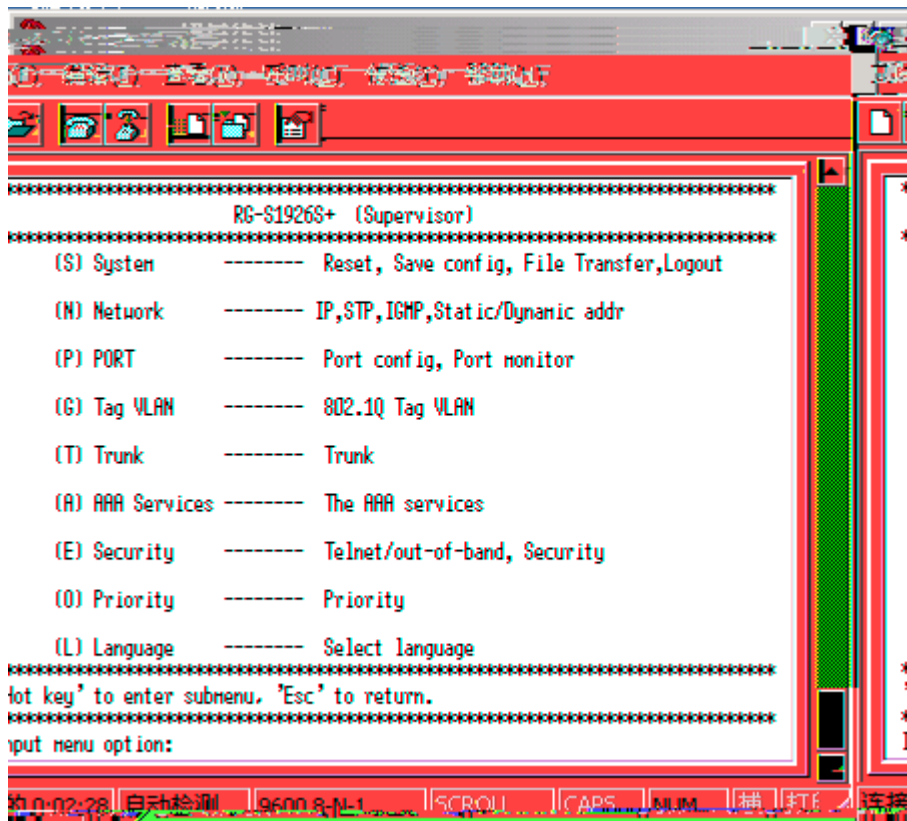


12 S

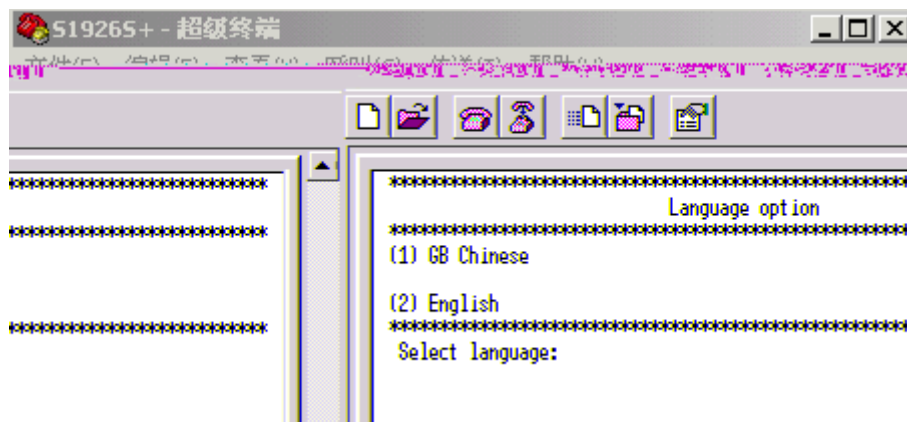
### S1926S+ IP



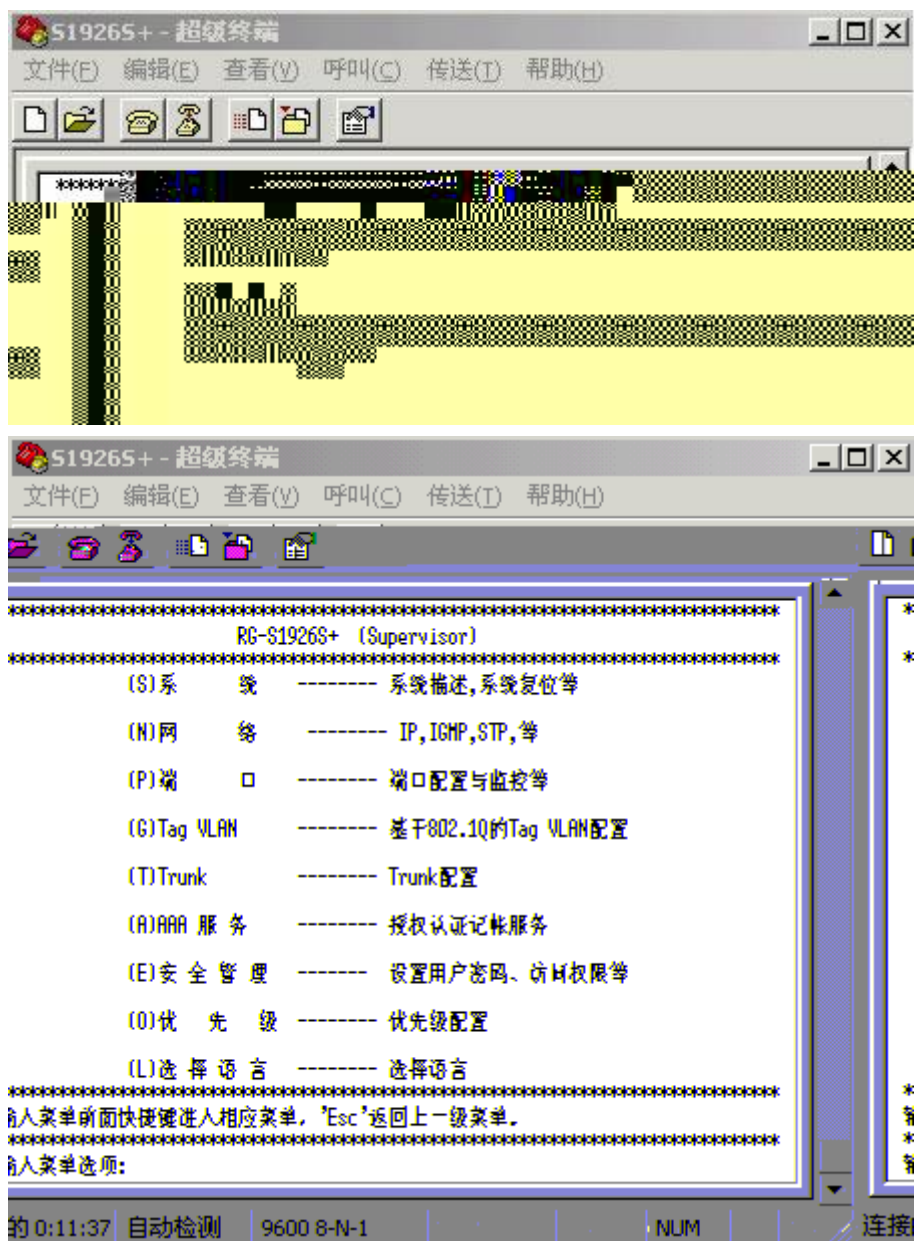
1 /



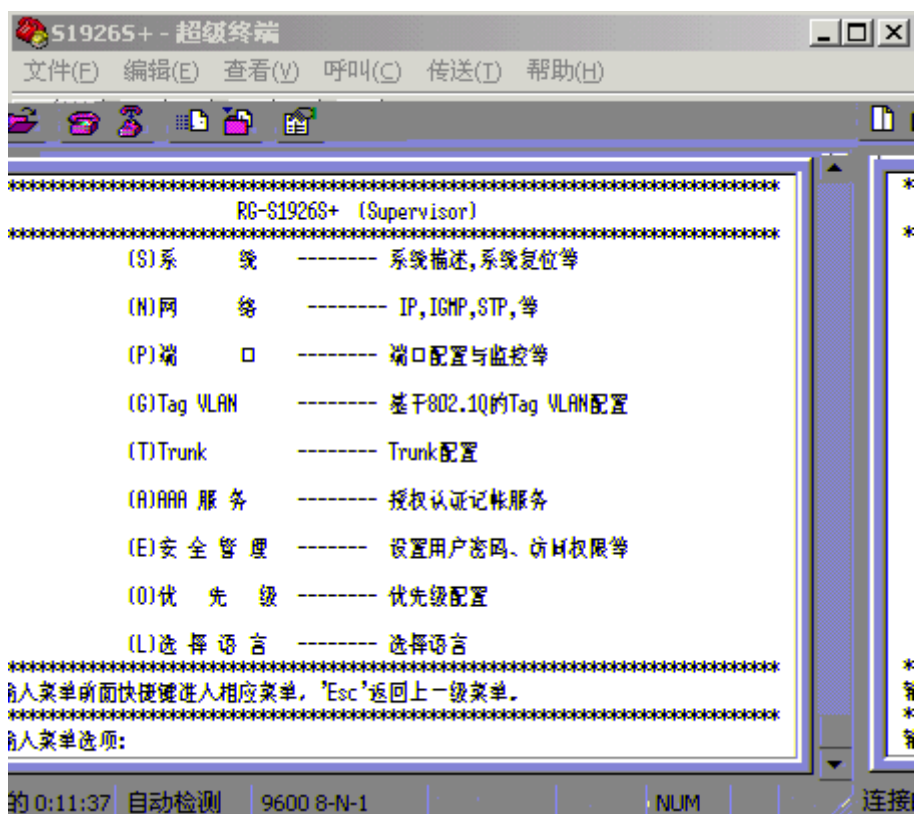
2 L



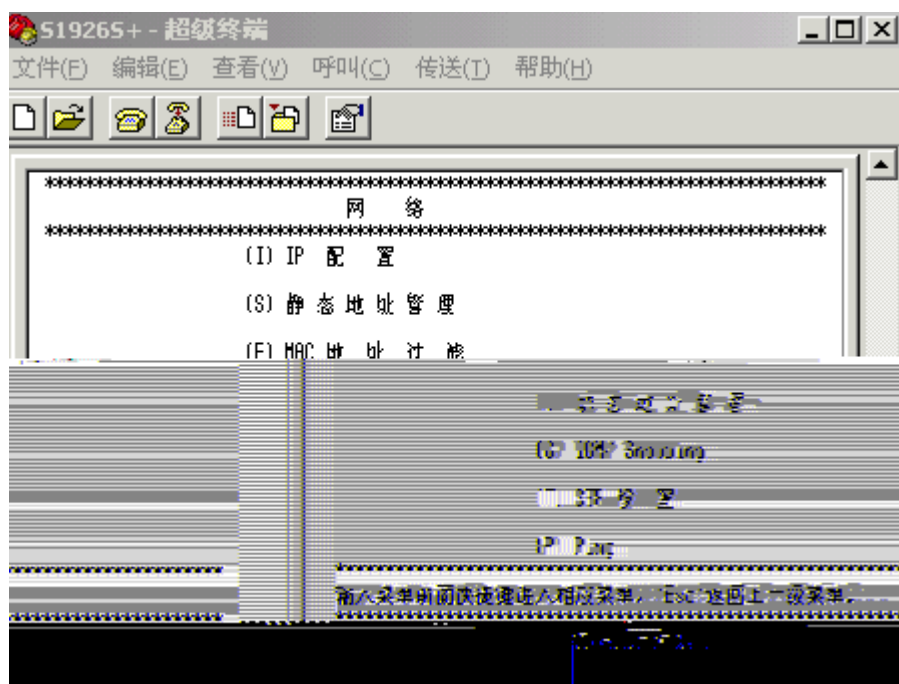
3 GB Chinese 1



IP

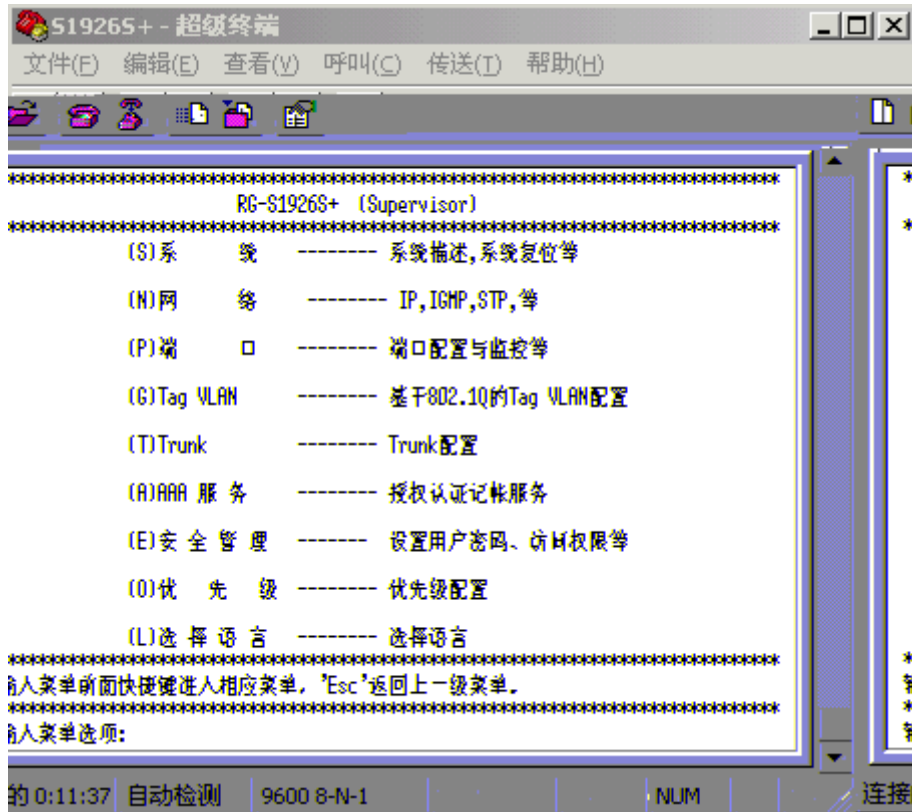


1 N

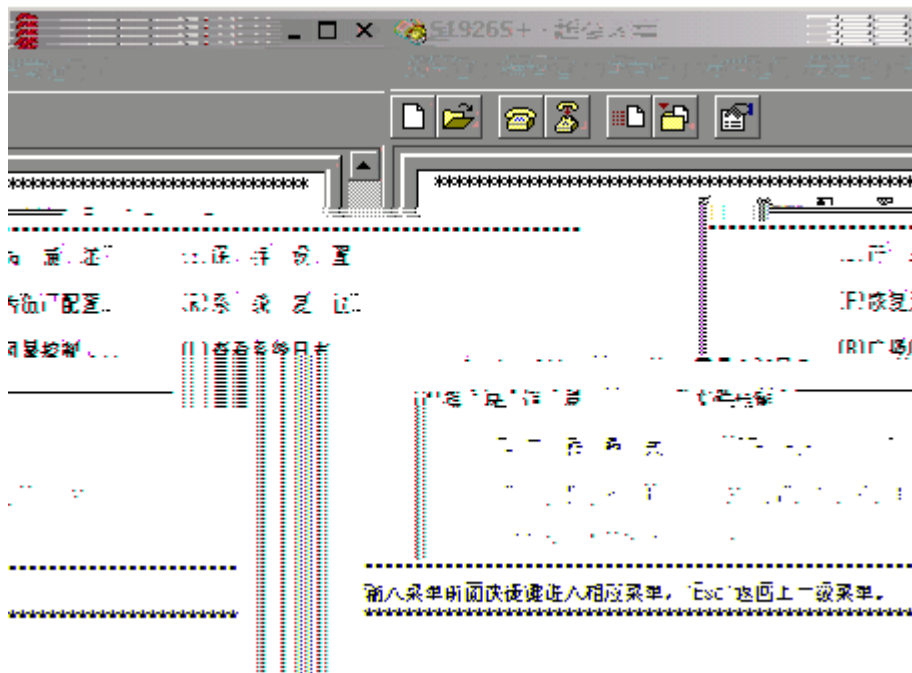


2 I IP





6 S



7 S

