

RG-RSR10-01G

F^ x Æ

V1.04

2022-06-30

copyright © 2023 iHå

copyright © 2023 iHà

®

~%yyK~Á

gôf•

ôwonnôS1B9CZ



(Tã s%-làR'i H à ì " ĐαÊ-!ôwÆ±à

Ⓜ

z ̀Vid

z ̀t

z ̀à

z iH` <http://www.ruijie.com.cn>

z iH` <http://www.ruijie.com.cn/fw/>

z iH` 7*24h`Uy <http://ocs.ruijie.com.cn>

z iH` 7*24h` 4008-111-000

z iH` 4i: 4i: <http://www.ruijie.com.cn/special/fw/tool/xryf/>

z iH` FØ y 4008111000@ruijie.com.cn

z iH` 4FØ doc@ruijie.com.cn



4i: APP

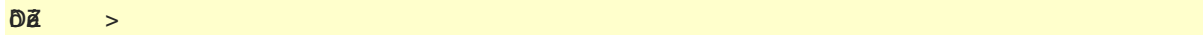
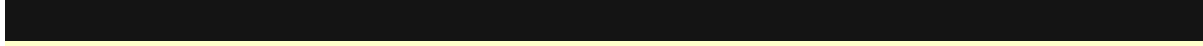


iH`

1.

Ⓜ

Ⓜ



👍 / (~be7â

👍 (~be7â*D>

2.



Ď

đ



đ.

1

RSR10-01G Da~LuxFzJx @55 6Ñ 9Lk0FJ
x@k.Aä sÄ@9cDa%Lu75pÄx@55G->Lu#
kDa~ñ(ÄkDaG551ñ6FJEE5BÄA~5x Ä

1.1 RSR10-01G

1.1.1 RSR10-01G

RSR10-01G DaK@55 6Ñ 9Lk0MA H% 55xÄ* 32 QW7- RISC #*6°
Äk0QW7-5505Ä 765#G51Ä. RSR10-01G DaÄ
55©Wx

RSR10-01G 3c Da~ 1 ; 3G f? Ä WCDMAÄ CDMA2000Ä T /y f? Da~ Ä RSR10-01G-WÄ
RSR10-01G-CÄ Ä 02DÜ02aF9Ä

1.1.2 RSR10

1.2.1

- „ K@ŠRSR10-01G DařF2X@J55)Ä
- „ 64i RJ45 ÄÄÄ ARP ÄÄ 802.1Q ÄÄ
- „ 1J/5ÄÄ X.25ÄÄ HDLCÄÄ PPP ¼ SLIP ÄÄ
- „ 55r:1 TCP/IP ÄÄÄÄ IPÄÄ ICMPÄÄ IGMPÄÄ TCP ¼ UDP 1yÄÄ
- „ 1J/y IP :0ÄÄÄ RIPÄÄ V1/V2ÄÄ OSPFÄÄ V1/V2ÄÄ 1ÄÄ1y
- „ 1551ÄÄÄÄ SNMP
- „ 1 TELNETÄÄ TELNET
- „ 1 DHCP ServerÄÄ DHCP ClientÄÄ DHCP RelayÄÄ TFTP 1y
- „ 17-È VRRP ÄÄÄÄ MW
- „ 1 PPPOE
- „ 1 DNS M%ÄÄÄÄ DDNS
- „ 12ÄÄÄÄÄÄ X-MODEM w4x ÄÄ
- „ 1 NATÄÄ ACLÄÄ AAA
- „ 1 IPSECÄÄ L2TPÄÄ PPTP

1.2.2 55r:1

ÄÄÄÄ

```
„ FJE=Console F5ž  
„ FJE=TELNET 6ž  
„ FJEF06ž
```

1.2.5

```
„ G¼ IP 5E%5pAF2wFp0 Ä  
„ 1 AAA ALA0RADIUS  
„ PPP A¼ PAP ¼ CHAP A¼ callbackÄ-JWÄ  
„ 64xž  
„ X
```

2

2.1

”

3

3.1

10155

3.2

10155

015

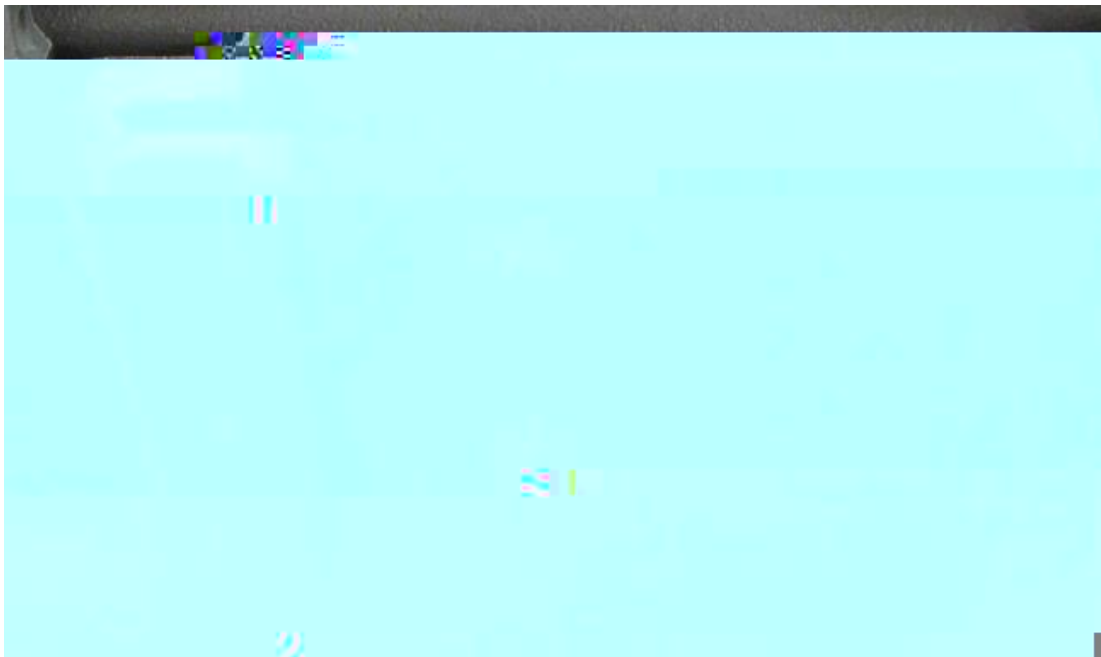
” 5

„ XCE

3.2.1

RSR10-01G X K8H'- AEtM0FCÅ 6kjXj:Ö

26cÖ



3.2.2

- „ AÖcW8Ö
- „ XLYjEaG,SDa% 10cm DLÄ
- „ XDa:Mh5EjA^M

3.3

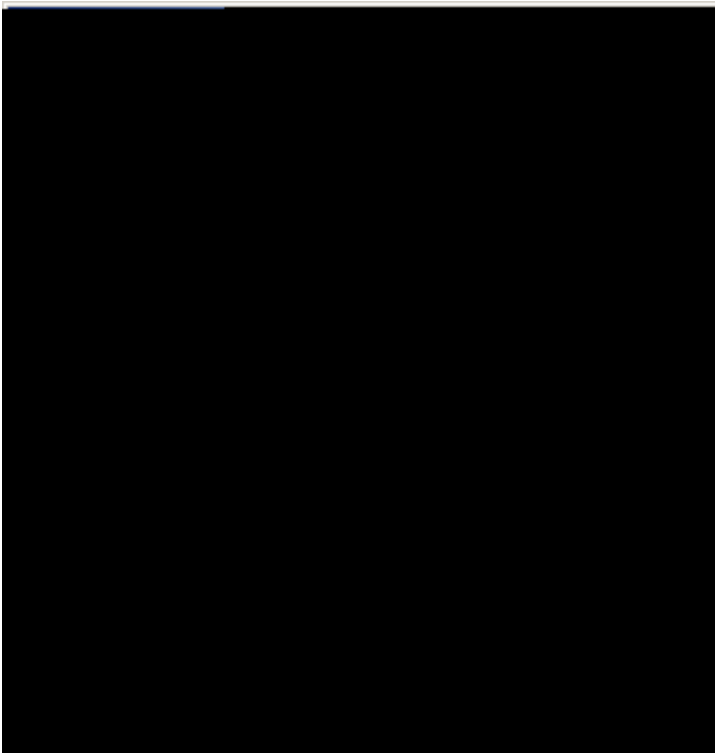
RSR10-01G Da1ÖÖ

AC: 100~240Vx 50-60Hz

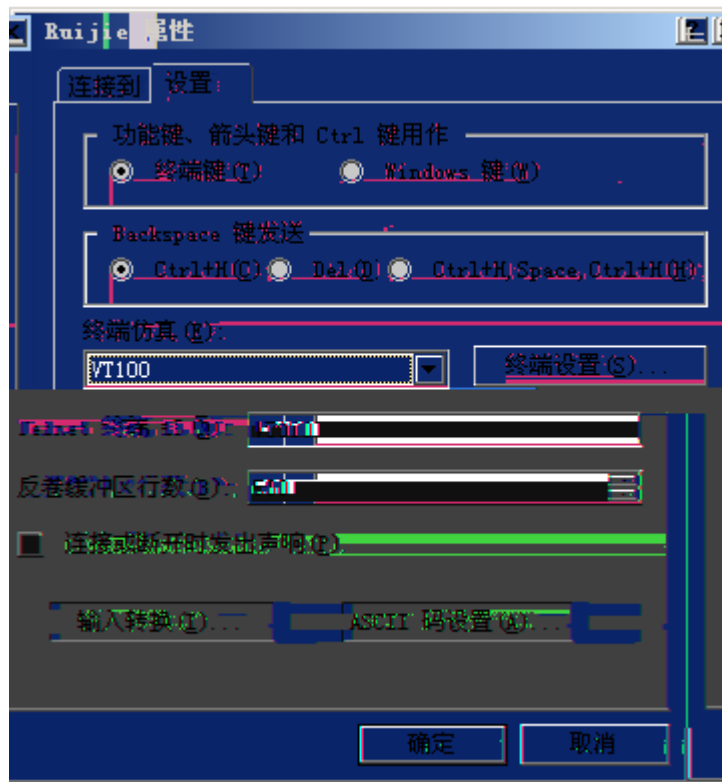
EÄ DC: 12V/1.25A

B:AÖ%Ö

A5bFJA6



F94b/-O2*



RG-RSR10-01G Da~ .exe

4.1.2

4.1.2.1

„ SYS 7/j...5/8c Ä
„ G541Vn/jh
„ Da~e40:Jn/jDaE8@1yX

4.1.3

000

```

*****
System bootstrap ...
Boot Version: RGOS 10.3(5T30), Release(113148)
Nor Flash ID: 0x00010049, SIZE: 2097152Bytes
MTD_DRIVER-5-MTD_NAND_FOUND: 1 NAND chips(chip size : 33554432) detected
MTD_DRIVER-5-MTD_NAND_FOUND: 1 nand chip(s) found on the target.
Press Ctrl+C to enter Boot Menu .....
Main Program File Name rgos.bin, Load Main Program ...

Executing program, launch at: 0x00010000
Ruijie General Operating System Software
Release Software (tm), RGOS 10.3(5T30), Release(113148), Compiled Wed Apr 6 17:01:22 CST 2011 by ngcf61

Copyright (c) 1998-2011s by Ruijie Networks.
All Rights Reserved.
Decompiling or Reverse Engineering is Not Allowed.

*Apr 14 08:45:33: %MTD_DRIVER-5-MTD_NAND_FOUND: 1 NAND chips(chip size : 33554432) detected
*Apr 14 08:45:33: %MTD_DRIVER-5-MTD_NAND_FOUND: 1 nand chip(s) found on the target.
*Apr 14 08:45:55: %7: this is a main board, it will creat factory menu.
*Apr 14 08:46:11: %SYS-5-COLDSTART: System coldstart.
Ruijie>
Ruijie>

```

Ä : 0j_03E0FEEx\ , D+a0j_0pÄ Ä

Fg0DaF55Ä

1b6Wp%g0AÄ

G50B/D%g00b5A6Ä

4.2

00000000-052%

63Ä

