

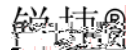


©2000-2010



RGOS®

RGNOS®



NPE RG-NPE40 RG-NPE60

NPE



NPE



NPE

RG-NPExxx

NPExxx

NPE



<http://www.ruijie.com.cn>



CD-ROM

CD-ROM

CD-ROM

CD-ROM



<http://www.ruijie.com.cn>



service@ruijie.com.cn



+86- 4008-111-000



0591-83057315



1

5

Terminal Display

Terminal Display

Courier New

8.5

2

r

]



		1
1.1	NPE	1
1.1.1	NPE40	1
1.1.2	NPE60	2
1.2	NPE	4
1.2.1		4
1.2.2		4
1.2.3		4
1.2.4		5
1.2.5		5
1.2.6		5
1.2.7		5
		6
2.1		6
2.2		6
2.2.1	/	7
2.2.2		7
2.2.3		8
2.2.4		8
2.2.5		8
2.3		8
		10
3.1		10
3.2		10
3.2.1		11
3.2.2		11
3.3		11
3.4		11
3.5		12
		13
4.1		13
4.1.1		13
4.1.2		15
4.1.3		16
4.2		17
		18
5.1		18
5.2		18

NPE

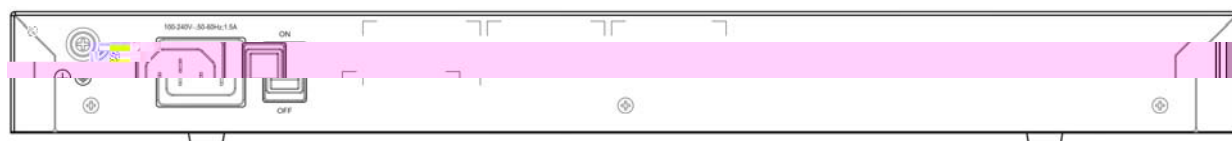
1.1 NPE

1.1.1 NPE40

1.1.1.1 NPE40

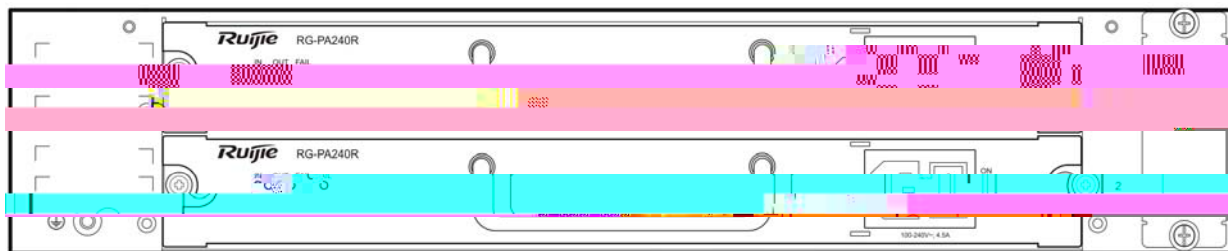


1-1 NPE40



1-2 NPE40

		10Base-T/100Base-TX/1000Base-TX, 1000BASE-SX/LX/ZX
		RS-232
(W × H × D)		440mm × 43.6mm × 400mm



1-4 NPE60

1.1.2.2 NPE60

NPE60

	DDR2 SDRAM 2GB
	BOOTROM 2MB
	FLASH 512MB
I/O	WAN 4 LAN 4 LAN/WAN
	100M
	1
	10Base-T/100Base-TX/1000Base-TX, 1000BASE-SX/LX/ZX 10G BASE-SX/LX
	RS-232
(W × H× D)	440mm× 81mm× 420mm
	100-240V~;50-60Hz
	100W
	0~50
	10~90%RH

1.1.2.3 NPE60

Status	
0 7	LED

	Link ACT 10/100M Link 10/100M ACT
0F 7F	LED Link ACT Link
0SFP+ 1SFP+	LED Link ACT Link

1.2 NPE

1.2.1

NPE

- RJ45 ARP
- TCP/IP IP ICMP IGMP TCP UDP
- IP RIP(V1/V2) OSPF
- SNMP
- TELNET
- DHCP
- PPPoE
- X-MODEM
- NAT
- VRRP
- L2TP PPTP
- TFTP

1.2.2

-
-
- web CLI

1.2.3

- DEBUG

-
-
- Console
- TELNET
- TFTP

1.2.4

- IP
- PPP PAP CHAP
- MAC
- NAT

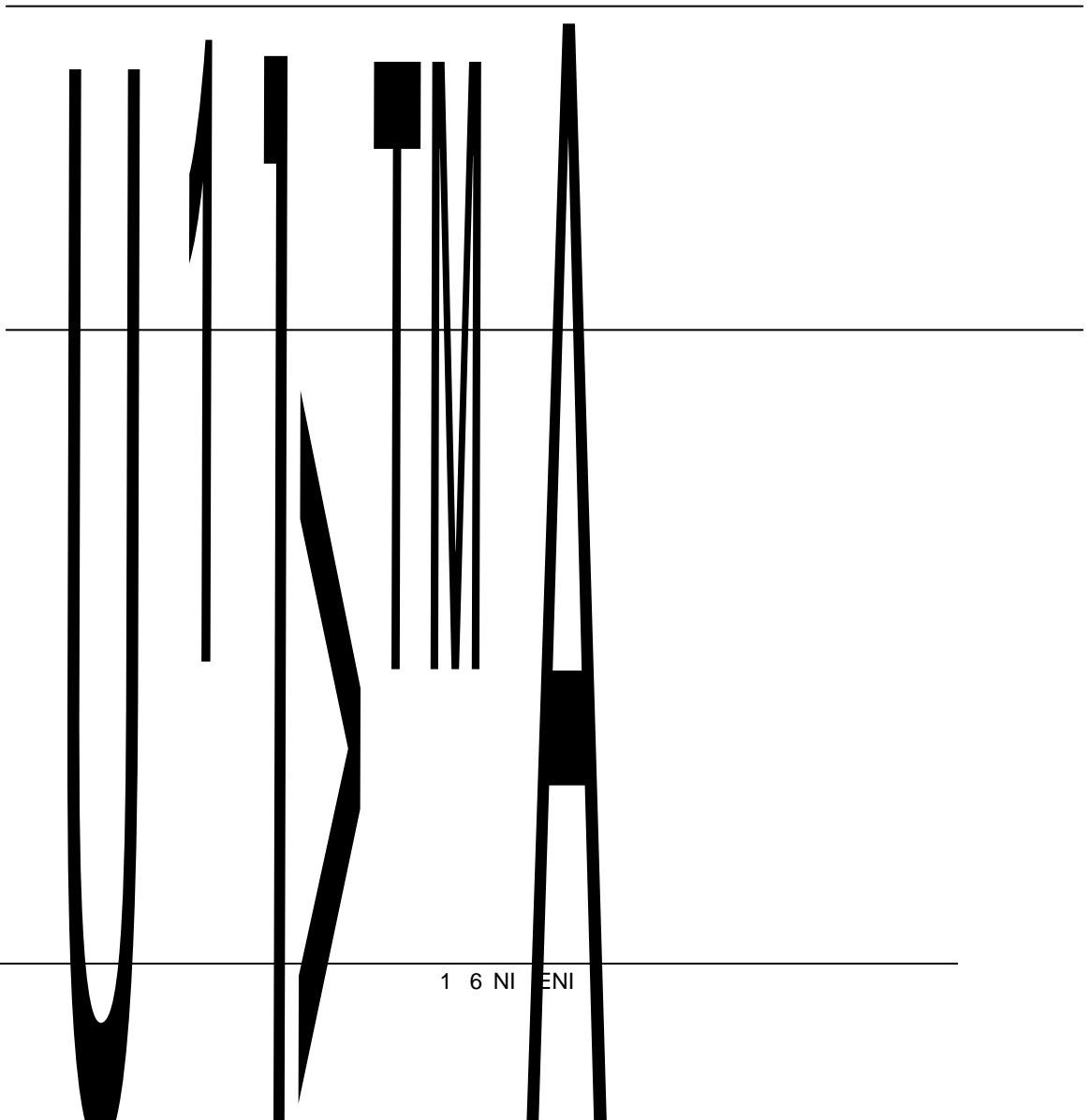
1.2.5

- DPI P2P IM
600
- / IP
Session

2.7 $\mathcal{J} >^{TM}) f W \zeta U''$

||

||



2.2.1 /

" "

15 ~30	0 ~45	40%~65%	10%~90%



0.4m
 48
 15
 5
 1.5m

2.2.2

(μ m)	0.5	1	3	5
()	1.4×10^7	7×10^5	2.4×10^5	1.3×10^5

SO2 H2S NO2 NH3 Cl2

	mg/m3	mg/m3
SO2	0.2	1.5
H2S	0	0.03
NO2	0.04	0.15
NH3	0.05	0.15

Cl2	0.01	0.3
-----	------	-----

2.2.3

-
-

-
-
-

-
-
-

2.2.4

-
-
-
-

2.2.5

-

19"

-
-
-

2.3

-

-
-

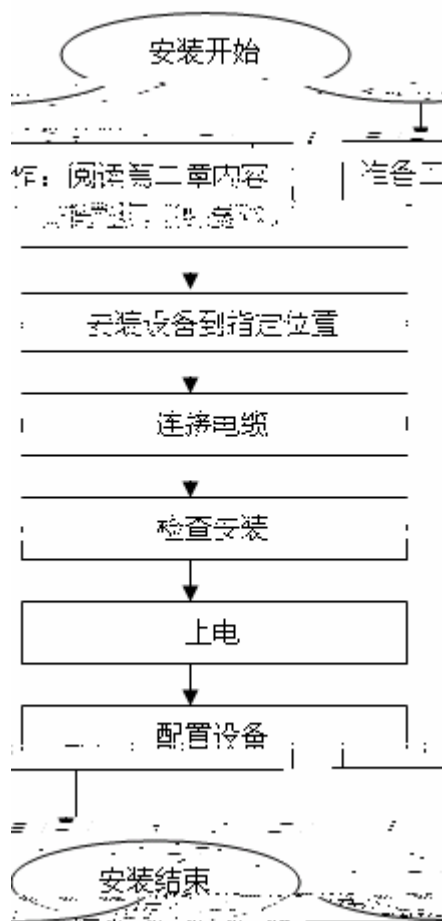
-
-

-
-
-
-

- HUB
-
-

PC

3.1



3.2

-
-

3.2.1

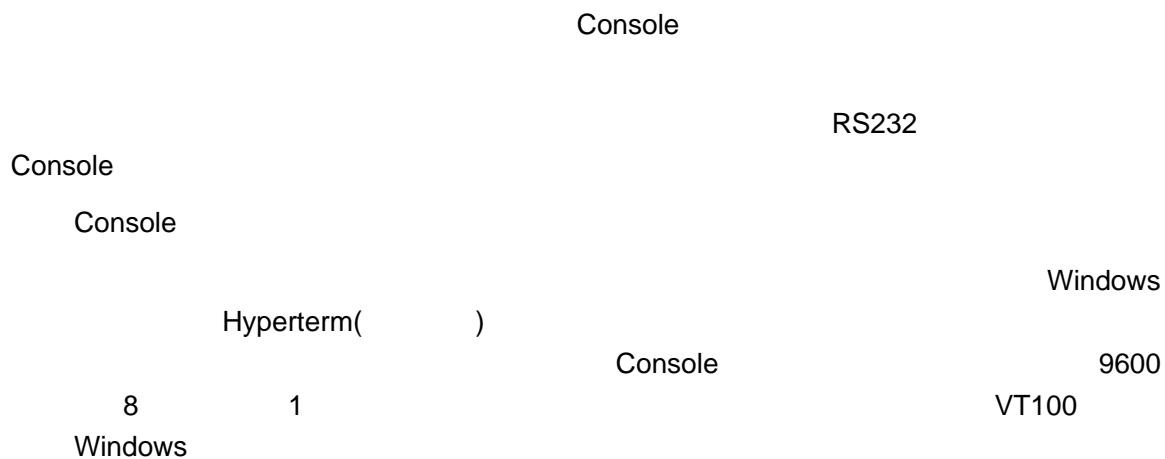
3.2.2

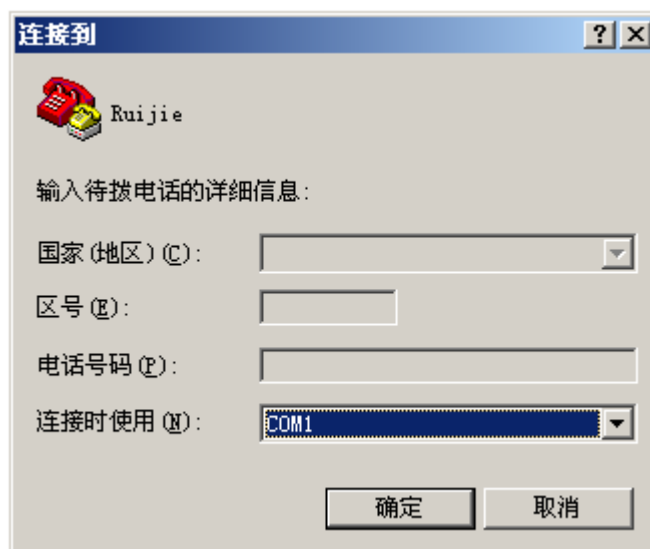
-
-
-

10cm

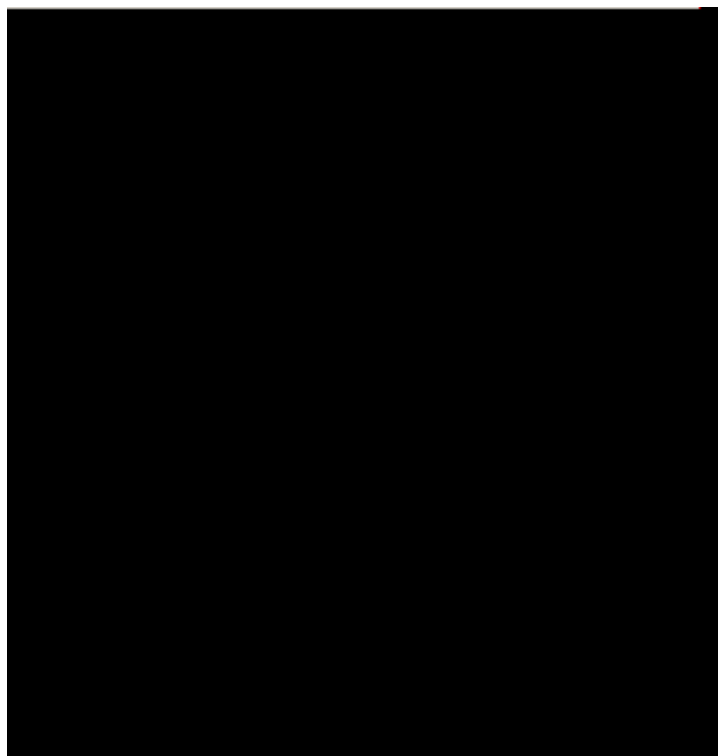
4.1

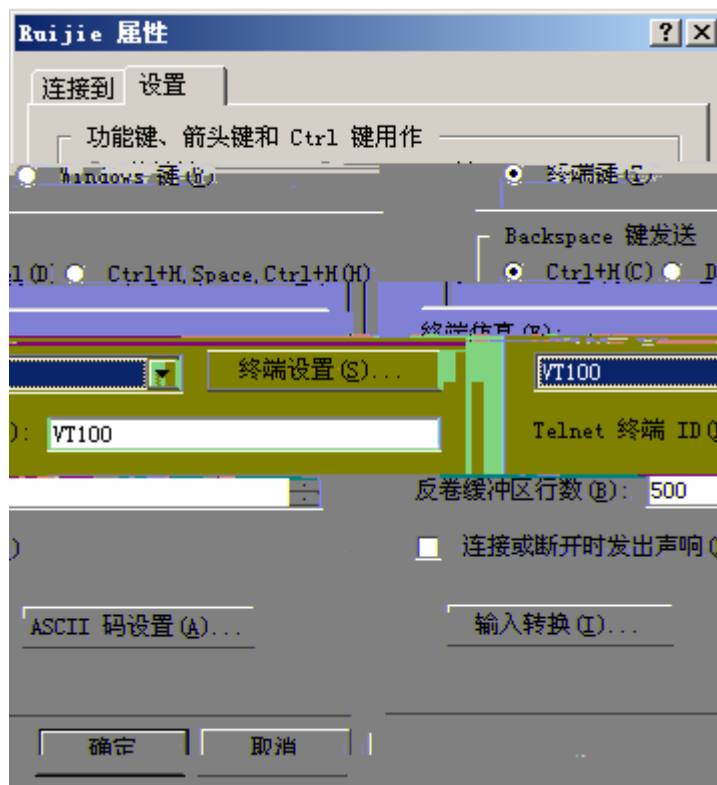
4.1.1





Console





4.1.2

4.1.2.1

-
-

r

4.1.2.2

-
-

" ON"

4.1.2.3

-
-
-

“ ”

4.1.3

NPE40

System bootstrap ...

Boot Version: RGOS 10.3(4b7), Release(78528)

Nor Flash ID: 0x00010049, SIZE: 2097152Bytes

MTD_DRIVER-5-MTD_NAND_FOUND: 1 NAND chips(chip size : 536870912) detected

Press Ctrl+C to enter Boot Menu

Main Program File Name rgos.bin, Load Main Program ...

Executing program, launch at: 0x00010000

Ruijie General Operating System Software

Release Software (tm), RGOS 10.3(4b7), Release(78528), Compiled Thu Mar 4 19:35:43 CST

2010 by ngcf35

Copyright (c) 1998-2010s by Ruijie Networks.

All Rights Reserved.

Decompiling or Reverse Engineering is Not Allowed.

*Jan 1 00:00:29: %MTD_DRIVER-5-MTD_NAND_FOUND: 1 NAND chips(chip size : 536870912) detected

*Jan 1 00:00:48: %LINK-3-UPDOWN: Interface GigabitEthernet 0/2, changed state to up.

*Jan 1 00:00:48: %LINEPROTO-5-UPDOWN: Line protocol on Interface GigabitEthernet 0/2, changed state to up.

*Jan 1 00:00:49: %LINK-3-UPDOWN: Interface GigabitEthernet 0/3, changed state to up.

*Jan 1 00:00:49: %LINEPROTO-5-UPDOWN: Line protocol on Interface GigabitEthernet 0/3, changed state to up.

*Jan 1 00:00:50: %LINK-3-UPDOWN: Interface GigabitEthernet 0/1, changed state to up.

*Jan 1 00:00:50: %LINEPROTO-5-UPDOWN: Line protocol on Interface GigabitEthernet 0/1, changed state to up.

*Jan 1 00:00:51: %LINK-3-UPDOWN: Interface GigabitEthernet 0/0, changed state to up.

5.1

NPE40 NPE60

PWR Status

-
-
-
-

r

PWR Status

5.2

-
-

8

1

VT100

9600